



# FreeFlow® Express to Print

Delivering quick and easy prepress.

# Get ready to speed up your prepress.

What if you could prepare your print jobs quicker and more easily?

What if you could reduce the time required to set up even your most cumbersome jobs?

FreeFlow® Express to Print is a cost-effective workflow solution that increases your productivity by addressing common symptoms that cause prepress bottlenecks. With its intuitive visual interface, you can perform job ticketing and prepress functions with a simple click of the mouse.

Impose and finish applications such as business cards, brochures, books, and manuals consistently and more efficiently—so you can keep your production pipeline filled. It's so easy to use, even novice users quickly become experts. If you want to enhance your productivity and profitability, why would you print without it?

## SIMPLIFIED JOB SETUP.

Directly convert TIFF, JPEG, BMP, PostScript®, EPS, RDO, and Microsoft® Office (Word, PowerPoint®, Excel®, and Publisher\*) files to true Adobe® PDFs, just by opening them up in FreeFlow® Express to Print. You can also convert files from any application into true Adobe® PDFs and automatically bring them into FreeFlow® Express to Print.\*<sup>2</sup> Automatically combine multiple files into one and perform tasks such as adding custom tabs, page inserts, covers, bar coding, page numbering, watermarks, and Bates stamping with drag-and-drop simplicity. This tool is not only fast, it's smart—select your Fuji Xerox printer and FreeFlow® Express to Print displays only the ticketing options available for that printer.

\*1: Requires optional Microsoft® Office software.

\*2: Requires optional Adobe® Acrobat® software.

## VISUAL JOB TICKETING.

An intuitive and highly visual interface lets you view and prepare jobs at the desktop, ensuring their accuracy before you submit them to print. Point and click to preview every page as you prepare your jobs with tabs, covers, chapter starts, and more. Maintain print quality and consistency for repeat jobs. View your job in page view, printer spreads, or reader spreads. Thanks to its logical, intuitive operations, FreeFlow® Express to Print is ideal for walk-up jobs and less-skilled operators. It reduces training time, number of software applications, and steps required to perform simple prepress activities.

## TEMPLATE-BASED AUTOMATION.

Take the guesswork and manual labor out of job preparation with over 50 predefined templates. The templates automate frequently repeated jobs, time-consuming setups, and routine prepress tasks such as imposition and finishing options. You'll be able to see a soft proof prior to submitting your job to print, so you can produce books, manuals, newsletters, postcards, posters, and more with greater ease and accuracy. There are even specialised templates for Pre-K–12 and Legal applications designed to work with key Fuji Xerox digital print engines. You can also create and distribute your own customised templates, so jobs can be prepared quickly and consistently according to your needs.

## TIMESAIVING TEMPLATES.

FreeFlow® Express to Print templates build speed and consistency into your workflow, helping you overcome the challenges that result when your operators have varied skill sets, high turnover rates, or dispersed locations. They range from universally common jobs to those frequently used in specific industries. Templates created for the Pre-K–12 and Legal industries, for example, include the following:

Business Cards



C-Fold Brochure



Postcard



Newsletter



Special Event Program



Calendar



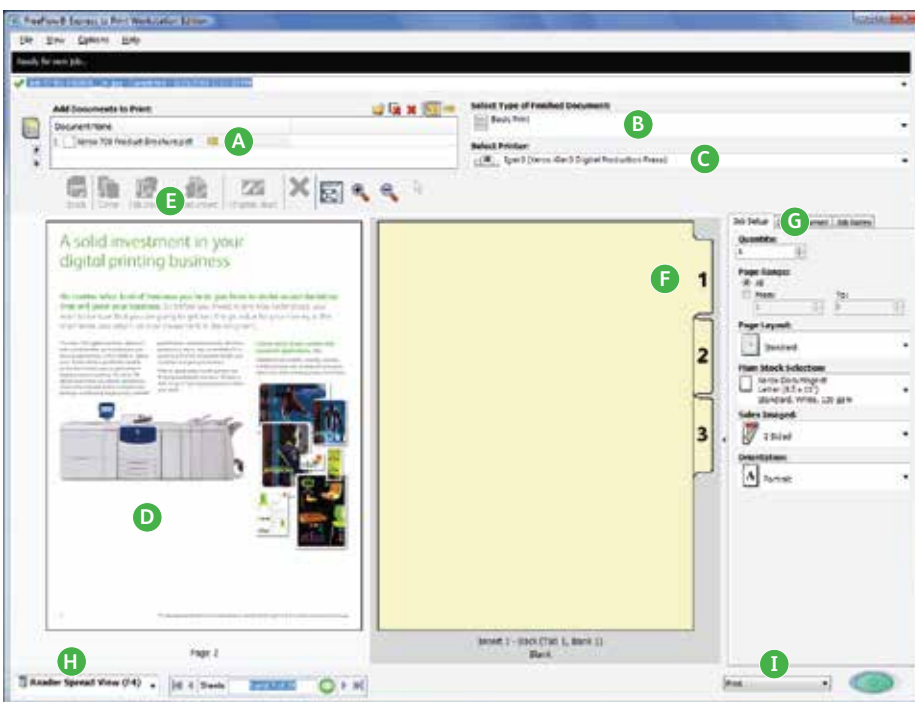
Pamphlet



## IT ADDS UP TO AN EASIER WORKFLOW—RIGHT FROM THE START.

You can install FreeFlow® Express to Print on your Windows® computer yourself—there's no complicated programming. And because it doesn't reside on a server, it doesn't tie up resources needed to process and RIP your jobs. Created to work exclusively with your Fuji Xerox digital print engines, FreeFlow® Express to Print will boost your colour and monochrome workflow productivity.

## THE QUICK AND EASY-TO-USE PREPRESS TOOL.



**A** **Active Jobs.** Open native file formats and automatically convert to PDF; join multiple files into one.

**B** **Automation Templates.** Select from 50 built-in templates (multi-up, signature books, etc.) that automatically apply imposition and finishing options to your job.

**C** **Destination Printer.** Connect to your Fuji Xerox digital printers, then choose which one you want to print to.

**D** **Interactive Visual Interface.** Dynamically preview your jobs as you build them.

**E** **Preparation Icons.** Using easily identifiable icons, click to add covers, stocks, tabs, inserts, watermarks, and page numbers—your job will automatically update in the visual interface.

**F** **Tab Customisation.** Create labeled tabs quickly and easily with formatting and style features that automatically embed information into the job ticket.

**G** **Job Ticketing Selection.** Select printing and finishing parameters or add special job notes/banner messages.

**H** **Preview Options.** Select to preview by page, printer spreads, or reader spreads.

**I** **Print.** Choose to print, save at printer, or print to file.

## SEEING IS BELIEVING.

Use FreeFlow® Express to Print's built-in templates to streamline a repeated job like business cards. Or create your own customised templates for other labor-intensive applications. Build a book with tabs, covers, insertions, and binding—all through FreeFlow® Express to Print's easy-to-use visual interface. Whatever jobs you print today, or want to print tomorrow, you'll see how FreeFlow® Express to Print makes your workflow smoother and faster.

Discover how you can move more jobs through your shop so you can be more productive every day. For a free demo, contact your Fuji Xerox representative.

# FreeFlow® Express to Print Specifications

## SUPPORTED IMAGE FILE FORMATS:

- TIFF
- JPEG
- Bitmap
- PostScript®
- EPS
- RDO
- Adobe® PDF
- Microsoft® Office (Word, PowerPoint®, Excel®, and Publisher)\*

\*Requires optional Microsoft® Office software.

## THE POWER OF FREEFLOW®.

**Fewer touches. Greater productivity.** The FreeFlow® Digital Workflow Collection can help you automate to save time and reduce costs for every job—from point of entry to final delivery. Whether you use one of these products or integrate several to meet your specific workflow needs, FreeFlow® solutions help you connect with your customers, reduce costs, and enable new applications.

Jobs can also be prepared with our document preparation software, which allows you to view and prepare jobs for printing—FreeFlow® Express to Print uses templates for ease and simplicity while FreeFlow Makeready® puts advanced capabilities at your fingertips.

Finally, the FreeFlow® Print Server RIPs the jobs, providing timesaving efficiency, excellent image quality, and benchmark security.

Looking to gain a competitive edge? Use the FreeFlow® Variable Information Suite to add personalisation and cost-effective security features to your documents, while optimising throughput speed and efficiency.

The bottom line? Whether you use one of these products or integrate several to meet your specific workflow needs, you can connect with your customers, reduce costs, and enable new applications.

All product names and company names mentioned in this brochure are trademarks or registered trademarks of their respective companies. The product specifications, appearance and other details in this brochure are subject to change without notice for improvements.

**Reproduction Prohibitions** Please note that reproduction of the following is prohibited by law : Domestic and foreign currencies, government-issued securities, and national bonds and local bond certificates. Unused postage stamps, post cards, etc. Certificate stamps stipulated by law. Reproducing works forming the subject matter of copyright (literary works, musical works, paintings, engravings, maps, cinematographic works, drawings, photographic works, etc.) is not permitted unless the reproduction is for the purpose of personal use, family use or other similar uses within a limited circle.



### For Your Safety

Before using the product, read the Instruction Manual carefully for proper use. Use the product with the power source and voltage specified. Be sure to establish ground connection. Otherwise, electronic shock may result in the case of a failure or short circuit.

[fujifilm.com/fbhk](http://fujifilm.com/fbhk)

# FUJIFILM

## FUJIFILM Business Innovation Hong Kong Limited

11/F, 12 Taikoo Wan Road, Taikoo Shing, Hong Kong  
Tel. +852 2513 2888 Fax. +852 2560 6433

Customer Support Center

Hong Kong Tel. +852 2513 2513 Fax. +852 2513 2518  
Macau Tel. +853 2855 8008 Fax. +853 2857 4996  
Email: [shm-fbhc-csc@fujifilm.com](mailto:shm-fbhc-csc@fujifilm.com)

FUJIFILM BI Hong Kong



This catalog includes Fuji Xerox product(s), licensed from Xerox Corporation. The distributor of the product(s) is FUJIFILM Business Innovation Corp. Xerox, Xerox and Design, as well as Fuji Xerox and Design are registered trademarks or trademarks of Xerox Corporation in Japan and/or other countries.

FreeFlow is registered trademarks or trademarks of FUJIFILM Business Innovation Corp. FUJIFILM and FUJIFILM logo are registered trademarks or trademarks of FUJIFILM Corporation.

FUJI XEROX

The information is as of April, 2021.