



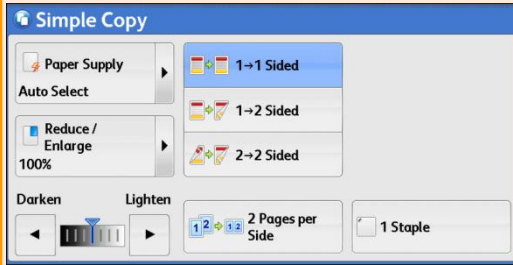
## No. and Component

- 1 <Services Home> button
- 2 <Job Status> button
- 3 <Power Saver> button
- 4 <Interrupt> button
- 5 <Clear All> button
- 6 <Stop> button
- 7 <Start> button
- 8 <C (Clear)> button

## Copy

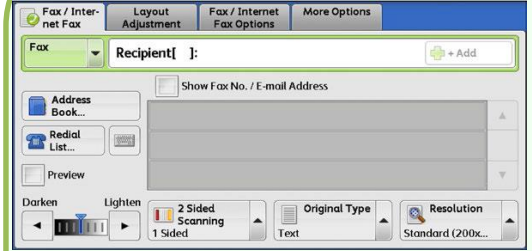


At [Copy] menu, select copy features. Press <Start> button.

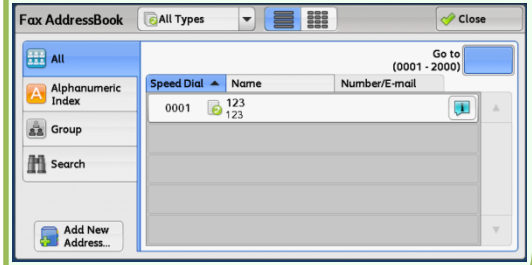


At [Simple Copy] menu, select the basic copy features. Press <Start> button.

## Fax

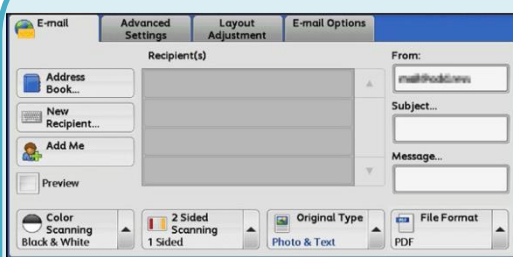


Dial fax numbers using the Control Panel. Select the features. Press <Start> button.

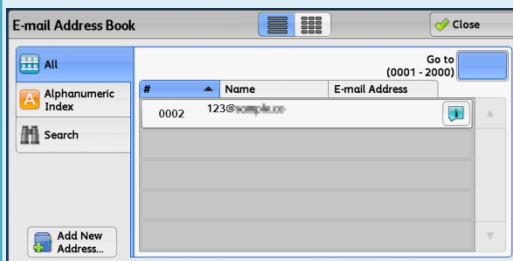


Press [Address Book]. Select fax number. Press <Start> button.

## Email



Select a recipient from the address list. Click [Close] to finish.

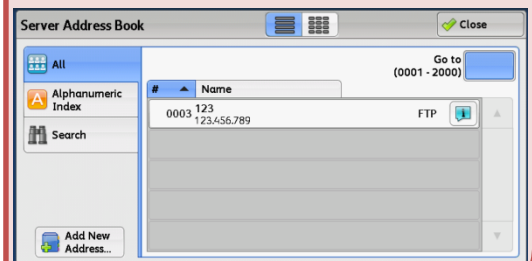


Select Scan features. Press <Start> button.

## Scan to PC



Select the destination to store the data in. Click [Close] to finish.



Select Scan features. Press <Start> button.