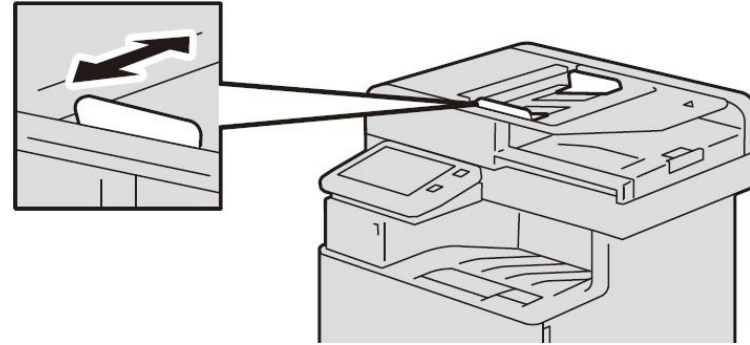


# QUICK REFERENCE FOR ApeosPort - VII C5021 / C4021



## No. and Component

- 1 <Reset> button
- 2 <Power> button
- 3 <Home> button
- 4 Data indicator
- 5 <Job Status> button
- 6 Note on status display lamp
- 7 User Login

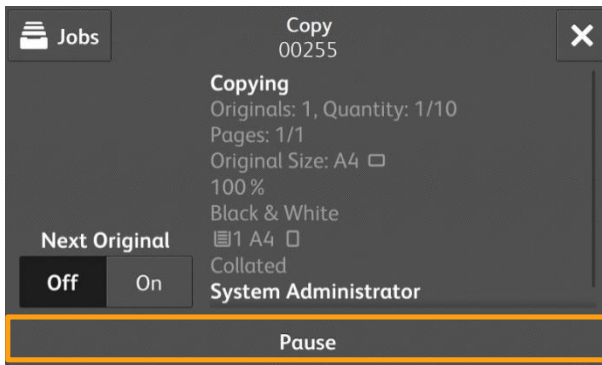


## Copy



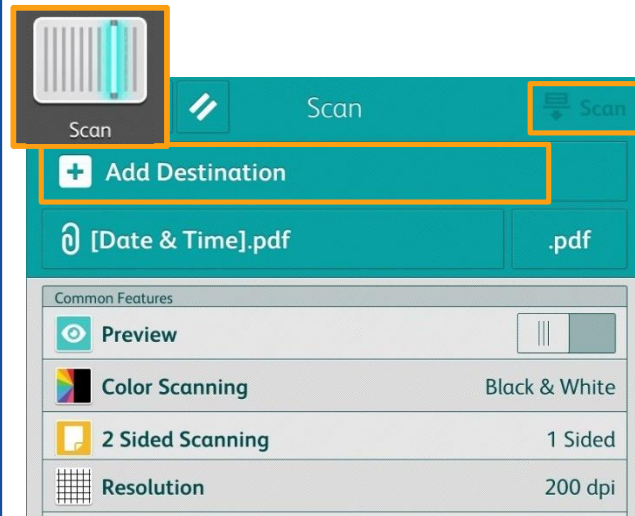
At [Copy] menu, select copy features, then press [Start].

## Stop Copy



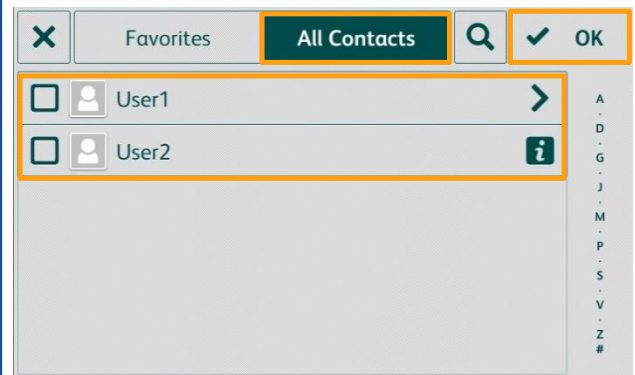
Select [Pause], then press [Delete].

## Scan



Select [Add Destination] to store the data in. Then select scan features and press [Scan].

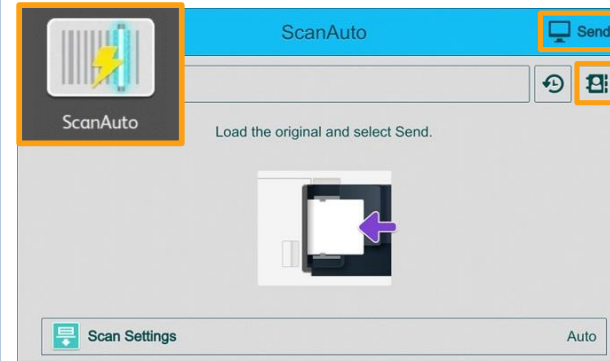
## Add Destination



Select recipient from the [All Contacts] list. Click [OK], then select scan features and press [Scan].

## Scan Auto

Scan Auto can skip the blank pages and rotate the pages into correct orientation automatically.



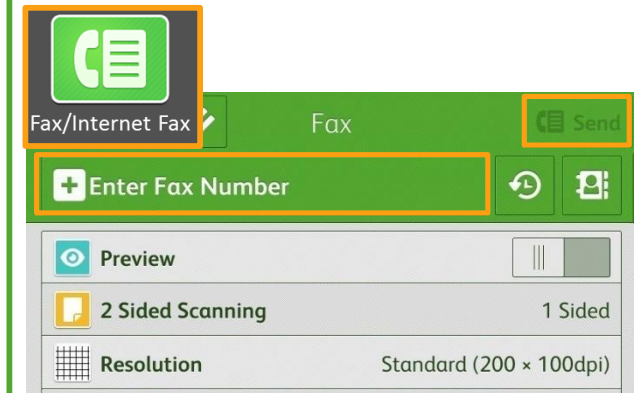
Select recipient from the [Address Book], then press [Send].

## Address Book



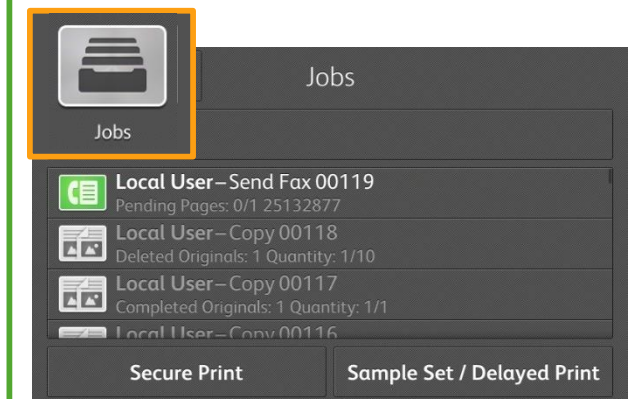
Select recipient from the [All Contacts] list.

## Fax



Select recipient from the [Enter] list. Click [OK], then select fax features and press [Send].

## Check Job Status



After fax transmission, select [Jobs] to verify the job completion status.