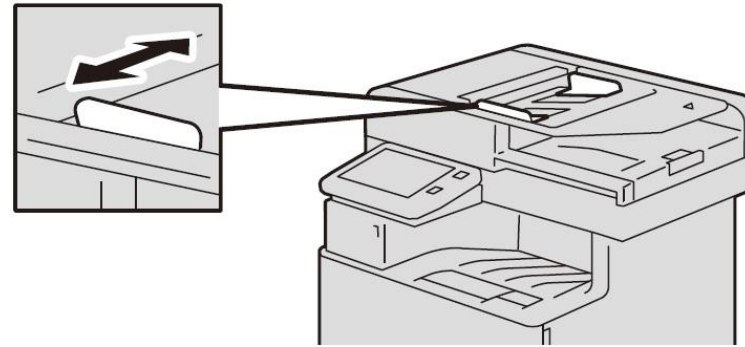
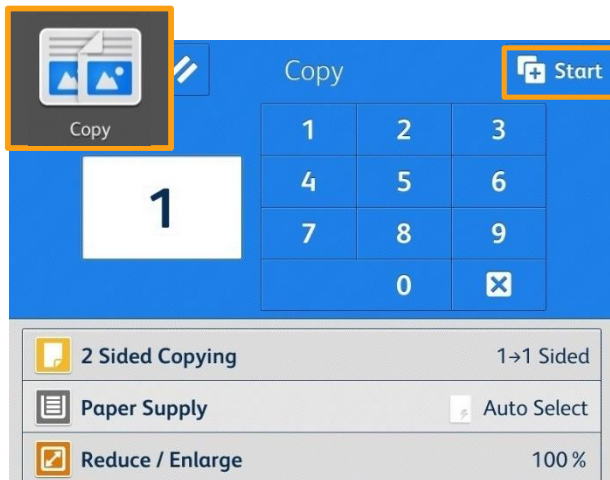




- No. and Component**
- 1 <Reset> button
  - 2 <Power> button
  - 3 <Home> button
  - 4 Data indicator
  - 5 <Jobs> button
  - 6 Note on status display lamp
  - 7 User Login

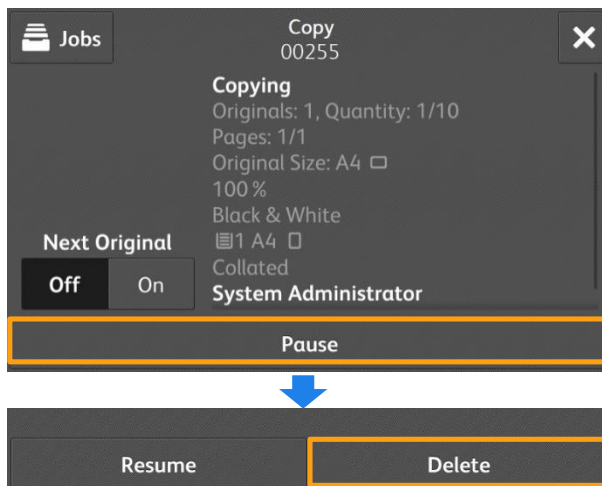


### Copy



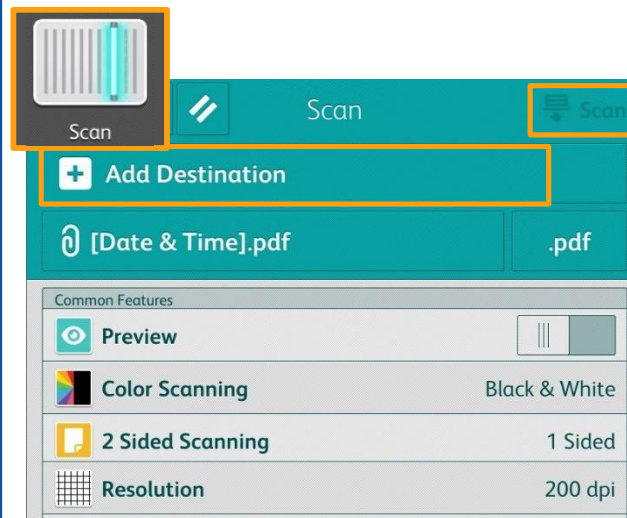
At [Copy] menu, select copy features, then press [Start].

### Stop Copy



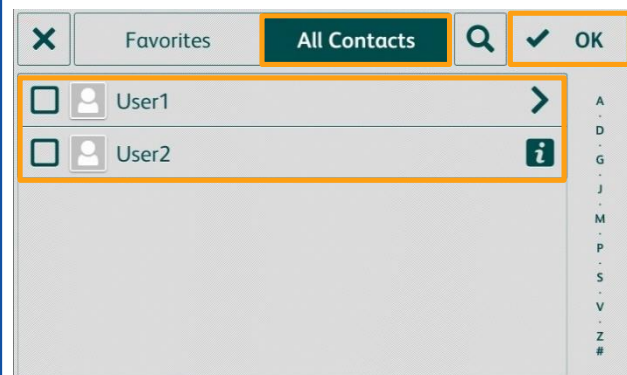
Select [Pause], then press [Delete].

### Scan



Select [Add Destination] to store the data in. Then select scan features and press [Scan].

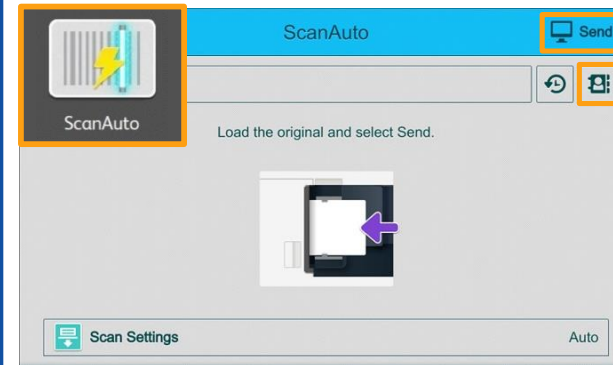
### Add Destination



Select recipient from the [All Contacts] list. Click [OK], then select scan features and press [Scan].

### Scan Auto

Scan Auto can skip the blank pages and rotate the pages into correct orientation automatically.



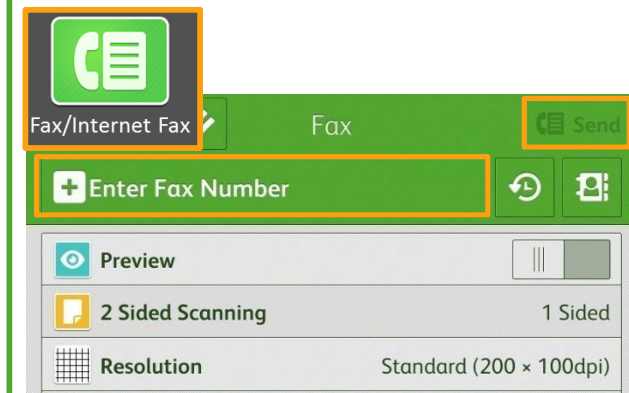
Select recipient from the [Enter] list, then press [Send].

### Address Book



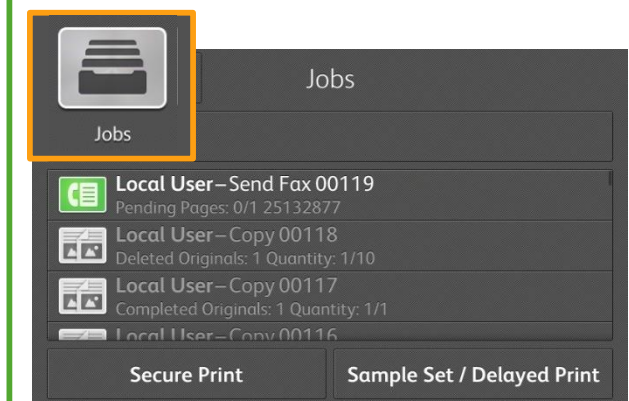
Select recipient from the [All Contacts] list.

### Fax



Select recipient from the [Enter] list. Click [OK], then select fax features and press [Send].

### Check Job Status



After fax transmission, select [Jobs] to verify the job completion status.