

DocuPrint 5105 d

Speed and productivity
for today's needs – and tomorrow's.



Powerful A3 printing with extensive productivity capabilities

Introducing the DocuPrint 5105 d. An A3 monochrome laser printer – providing high speed printing with ultra reliability that is ideal for high volume printing. With an extensive list of expandability options, it is the ideal solution to meet the demands of today's printing needs – as well as tomorrow's.

Performance and Reliability

High speed, reliable printing

With its newly designed high speed print engine, the DocuPrint 5105 d delivers a blistering 55 pages a minute¹ with ultra dependability – perfect for high volume monochrome printing applications.

¹A4 paper, 1 sided

Ready to go when you need it

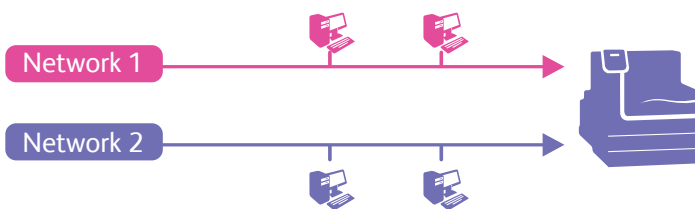
The DocuPrint 5105 d boasts a first page out time of just 2.7 seconds, making quick work of on-the spot print requests.

Warm-up time from power on is also a quick 22 seconds or less, and just 12 seconds or less from sleep mode.

High speed connection of up to 2 networks*

The DocuPrint 5105 d comes standard with hi-speed Gigabit Ethernet, enabling high-speed connection to the network.

As a first for the FUJIFILM Business Innovation printer lineup, you can now connect up to 2 Ethernet networks*, meaning printing can now be performed in two completely independent network environments. Security is ensured as there is no connection between either network.



*Requires optional Secondary Ethernet kit



Enhanced Productivity

Versatile paper handling

A wide range of media types can be handled, ranging from 60gsm through to 216gsm. Bypass tray supports standard paper from postcard through to A3 size, plus custom paper sizes (width: 75 to 297 mm, length: 98.4 to 431.8 mm).

Paper capacities start from 1,095 sheets as standard, up to a massive 5,095* sheets.

*With optional Tandem Tray Module and HCF. Paper counts based on 80gsm paper.

Professional Finishing capability

The DocuPrint 5105 d has an array of finishing options available that delivers professional-quality document production.

Standard Function of C3 Finisher with Booklet Maker



Single Fold



Middle Fold



Saddle Staple

Optional Function of C3 Finisher with Booklet Maker when Folder Unit CD1 is added



C-Fold



Z-Fold



Z-fold Half Sheet

DocuPrint 5105 d (Standard Configuration)

Print

A3 Monochrome: 55 ppm
Paper Capacity: 1,095 Sheets

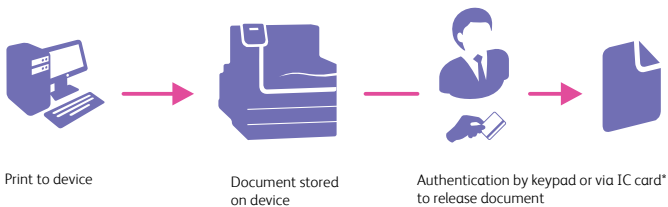


Fast and reliable A3 monochrome printing with extensive expandability options to meet your printing demands

Secure document printing

Secure Print safeguards your confidential documents

Secure Print works by storing print data in the memory of the printer or hard disk. You can then release the data to print by entering a password on the printer's keypad, or by using an IC Card*. This feature helps prevent the mix-up of documents and works well on highly confidential documents in shared print environments.



*Optional IC Card reader required

Prevent unauthorised document copying

The DocuPrint 5105 d incorporates a paper security function that allows the user to Water Mark printed documents with a copy restriction code and a Universally Unique Identifier (UUID), that restricts the document from being copied or scanned, and can also identify the print machine that was used to print the document.



The simplified control panel of the DocuPrint 5105 d makes on-printer operations quick and easy.

The print solution that grows with your business

The DocuPrint 5105 d has been designed with scalability in mind. As your business grows and your printing demands increase, rest assured that functionality and productivity enhancements can be easily added to meet your requirements.

- ① Tray 1 (standard) 500 sheets
- ② Tray 2 (standard) 500 sheets
- ③ Tandem Tray Module (optional)
870 sheets + 1,130 sheets
- ④ HCF (optional)
2,000 sheets
- ⑤ Folder Unit (optional)
- ⑥ C3 Finisher and Booklet Maker (optional)

* Paper counts based on 80gsm paper.

C3 Finisher or C3 Finisher with Booklet Maker requires Transport Unit H2.



DocuPrint 5105 d Specifications

Basic Function / Main Unit

| Item | Description |
|--|--|
| Type | Desktop Laser |
| Memory Capacity | 2GB (Max: 2GB) |
| Hard Disk Capacity | Option 160GB (Usable space) |
| Printing Resolution | 1,200 x 1,200 dpi, 600 x 600 dpi, |
| Halftone | 256 Levels |
| Continuous Print Speed*2 | Simplex A4 LEF: 55ppm, A3: 28 ppm |
| | Duplex A4 LEF: 50ppm, A3: 18ppm |
| Warm-up Time (at room temperature 20°) | 22 seconds or less from Main power switch ON 12 seconds or less from low power mode |
| First Print Out Time (FPOT)*2 | 2.7 seconds or less (A4 LEF) |
| Network Protocol | TCP/IP (IPv4/IPv6, lpd, Port9100, IPP) |
| PDL | PCL, Adobe Post Script3, XPS, PDF |
| Connectivity | Standard 10 Base-T/100Base-TX/1000Base-T, USB2.0 |
| | Option Secondary Ethernet kit (10 Base-T/100Base-TX), Parallel port |
| Paper size | Standard Tray1/2: A3, B4, A4, B5, A5, legal, Letter, Custom paper size(W 140 - 297mm x L 182 - 431.8mm) Bypass Tray: A3, B4, A4, B5, A5, legal, Letter, 11 x 17", Envelope (120 x 235 mm), Custom paper size (W 89 - 297 mm x L 98.4 - 431.8 mm, W 297 mm x L 432 mm) |
| | Optional 2 Tray module: A3, B4, A4, B5, A5, legal, Letter, Custom paper size (W 140 - 297mm x L 182 - 431.8mm) Tandem Tray module: A4, B5, Letter HCF: A4, B5, Letter |
| | In Duplex A3, B4, A4, B5, A5, legal, Letter, Custom paper size (W 128 - 297mm x L 182 - 432 mm) |
| Paper Weight*3 | Standard Tray1: 60-105 gsm Tray2: 60-216 gsm Bypass Tray: 60-216 gsm |
| | Optional 2 Tray module: 60-216 gsm Tandem Tray module: 60-216 gsm HCF: 56-216 gsm |
| | In Duplex 60-105 gsm |
| Paper Tray Capacity | Standard Tray1: 500 sheets + Tray2: 500 sheets, Bypass tray: 95 sheets = 1,095 sheets |
| | Optional 2 Tray module(Tray 3& 4): 500x 2 = 1,000 sheets TTM: 870 + 1130 = 2,000 sheets HCF: 2,000 sheets |
| | Max. 5,095 sheets (Standard trays + Bypass tray + TTM+ HCF) |
| Detect remaining paper | 0%, 25%, 50%, 75%, 100% (Available for Tray1-4, HCF) |
| Output Tray Capacity*5 | Standard Centre Tray: 500 sheets (A4) |
| | Option Centre Tray & Exit 2 tray (Option): 250 sheets for each. 500 sheets total |
| Operating System*6 | Windows Windows Server® 2003 (32bit), Windows Vista® (32bit), Windows Server® 2008 (32bit), Windows® 7 (32bit), Windows® 8 (32bit), Windows® 8.1 (32bit), Windows Server® 2003 (64bit), Windows Server® 2008 R2 (64bit), Windows Server® 2012 (64bit), Windows Server® 2012 R2(64bit), Windows Server® 2016 (64 bit), Windows Vista® (64bit), Windows Server® 2008 R2 (64bit), Windows® 7 (64bit), Windows® 8 (64bit), Windows® 8.1 (64bit), Windows Server® 2012 (64bit), Windows Server® 2012 R2(64bit), Windows Server® 2019 (64 bit) |
| | Mac Mac OS X 10.5 / 10.6 / 10.7, OS X 10.8 / 10.9 / 10.10 / 10.11, macOS 10.12 / 10.13 / 10.14 / 10.15 / 11 |
| Power Source | AC220-240V +/- 10%, 15A, 50/60Hz common, AC110V +/- 10%, 15A, 60Hz common |
| Power Consumption | Printing: 1, 300w,Ready: 120w, Deep sleep: 2w |
| Operating Environment | Operating: 10°C - 32°C, Relative Humidity: 15% - 85% |
| Machine Life | 5 years or 3,000 k PV |
| Monthly Duty Cycle | 200,000 pages |
| Dimensions | W 640 x D 669x H 693 mm |
| Weight | 54kg (w/o Toner cartridge) |

*1: Print speed may be reduced due to image quality adjustment. The performance may be reduced depending on the paper type. *2: The values may vary depending on the machine configuration. *3: The use of paper recommended by FUJIFILM Business Innovation is suggested. Printing may not be performed correctly depending on the configurations. *4: When using 80 gsm paper. *5: When using 64 gsm paper *6: Please refer official website for the latest supported OS information.

Notes

- 1) If the storage media (such as hard disk drives) of the base unit fail, loss of received data, accumulated data, registered setting data, etc. may occur. In no event shall the Company be liable for any damages whatsoever arising from loss of data.
- 2) Functional spare parts will be available for at least 7 years after the product is no longer manufactured.
- 3) The product specifications, appearance and other details in this catalog are subject to change without notice for improvements.
- 4) The available model varies depending on the country/region. Please ask the sales representatives for details.

Other company names or product names are registered trademarks or trademarks of each company.

Reproduction Prohibitions Please note that reproduction of the following is prohibited by law: Domestic and foreign currencies, government-issued securities, and national bonds and local bond certificates. Unused postage stamps, post cards, etc. Certificate stamps stipulated by law. Reproducing works forming the subject matter of copyright (literary works, musical works, paintings, engravings, maps, cinematographic works, drawings, photographic works, etc.) is not permitted unless the reproduction is for the purpose of personal use, family use or other similar uses within a limited circle.

Accessories

| Item | Code | Capacity |
|--|----------|-----------------|
| Exit2 Tray | E3300198 | - |
| HDD Extension Kit | E3300197 | - |
| KR Additional Font Kit | E3300201 | - |
| TC/SC Additional Font Kit | E3300202 | - |
| Security Extension Kit | E3300203 | - |
| Multi Language Font Kit | EC101145 | - |
| Two Tray Module (Tray 3 & 4) | EL200969 | 1,000 sheets *1 |
| Tandem Tray Module (Tray 3 & 4) | EL200970 | 2,000 sheets *1 |
| High Capacity Feeder (HCF) | QC100123 | 2,000 sheets *1 |
| Secondary Ethernet kit | EL201151 | - |
| Parallel Port Kit | EC102449 | - |
| IC Card Reader for MIFAIR | E9100123 | - |
| IC Card Reader for HID Prox | E9100124 | - |
| IC Card Reader | E9100100 | - |
| Authentication Controller | E9100122 | - |
| AC Adaptor for Authentication Controller | E9100126 | - |
| Embedded IC Card Reader (for Felica) | E3300207 | - |
| Embedded IC Card Reader (for HID) | E3300208 | - |
| Finisher C3 | QD200084 | - |
| Finisher C3 with Booklet maker | QD200085 | - |
| Transport Unit H2 for Finisher C3 | QL200091 | - |
| Folder Unit CD1 | QC100122 | - |
| 65 Sheets Staple Unit for Finisher C3 | EC102678 | - |
| Punch Unit 2H/4H CD1 | EC102445 | - |
| Punch Unit US 2H/3H CD1 | EC102446 | - |
| Attention Light II | EC100639 | - |
| User guide Holder | EC102239 | - |

*1: Capacity based on 80gsm paper.

Consumables

| Item | Code | Yield |
|---|----------|---------|
| Toner Cartridge - Std Capacity (K)*1 | CT202338 | 15,000 |
| Toner Cartridge - High Capacity (K)*1 | CT202337 | 30,000 |
| Toner Cartridge - High Capacity MPS (K)*1 | CT202339 | 30,000 |
| Drum Cartridge | CT351059 | 57,000 |
| Staple Cartridge Types XE (2PCS) for 50 sheet | CWAA0856 | - |
| Staple Cartridge Types XH (3PCS) for 65 sheet | CWAA0855 | - |
| Fusing Unit(110V) | E3300205 | 300,000 |
| Fusing Unit(220V) | E3300206 | 300,000 |

*1: Average standard pages. Declared Yield in accordance with ISO/IEC 19752. Yield will vary based on image, area coverage and media used.

FUJIFILM

For more information or detailed product specifications, please call or visit us at

FUJIFILM Business Innovation Hong Kong Limited

11/F, 12 Taikoo Wan Road, Quarry Bay, Hong Kong
Tel. 852-2513-2513

fujifilm.com/fbhc

FUJI XEROX 



For Your Safety

Before using the product, read the Instruction Manual carefully for proper use. Use the product with the power source and voltage specified. Be sure to establish ground connection. Otherwise, electronic shock may result in the case of a failure or short circuit.