



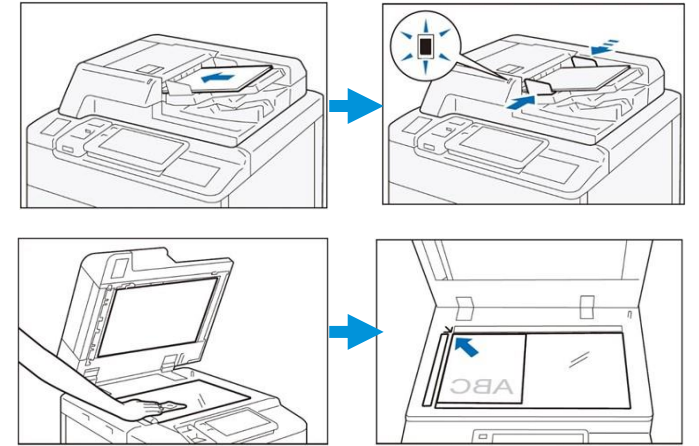
For assistance, please call 2513 2513.

**Apeos 7580 / 6580**




**No. and Component**

- 1) <Power Saving> button
- 2) Jobs
- 3) <Home> button
- 4) Data indicator
- 5) Login / Out
- 6) Pins
- 7) Address Book



### Copy



**Copy**

Quantity: 1

2 Sided: 1→1 Sided

Paper Supply: Auto Select

Reduce/Enlarge: 100%


Pages per Side: Off

Lighten/Darken: Normal

**Start**

Configure the print quantity and the setting items. Tap on **[Start]**.

### Scan



**Scan**

Select from Address Book

Specify Send Method

SMB

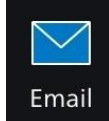
FTP

SFTP

One-Touch Buttons

**Start**


Specify the recipient by tapping on the **[Address Book]**. Configure the **[Setting Items]** and tap on **[Start]**.



**Email**

Add Recipient

Specify recipient by using **[Keyboard]** or by tapping on the Address Book. Configure the **[Setting Items]** and tap on **[Start]**.



**ScanAuto**

Scan Auto skip the blank pages and rotate the pages into correct orientation automatically.

User1  
user1@fujifilm.com

Load your originals and start.

Scan Settings: Auto

**Start**

Specify recipient from **[Address Book]**, then tap on **[Start]**.

### Stop Copy

Copy

Add Next Original

Copying.

Original: 3

Quantity: 1/10

Page: 2/2

Original Size: A4

**Pause**

---

Page: 2/2


Original Size: A4

**Delete**

**Start**

Tap on **[Pause]**, then tap on **[Delete]**.

### Fax



**Fax**

Add Recipient


25132899

25132877

1	2 ABC	3 DEF
4 GHI	5 JKL	6 MNO
7 PQRS	8 TUV	9 WXYZ
* 0 #		

**Done**

Enter the recipient with the **[Keyboard]** and tap on **[Done]**. Configure the **[Setting Items]** and tap on **[Start]**.



**Jobs**

All Jobs

Local User Send Fax Sending 25132877

Local User Copy Deleted Quantity: 7/10

Local User Copy Completed Quantity: 1/1

Local User Copy Deleted Quantity: 1/10

Local User Copy Deleted

Print Waiting Jobs

Stored Print Jobs

After fax transmission, tap on **[Info]** to verify the job completion status.

### Enquiry

Scan QR Code for more instruction.



Visit below website for more online support.  
<https://support-fb.fujifilm.com>