

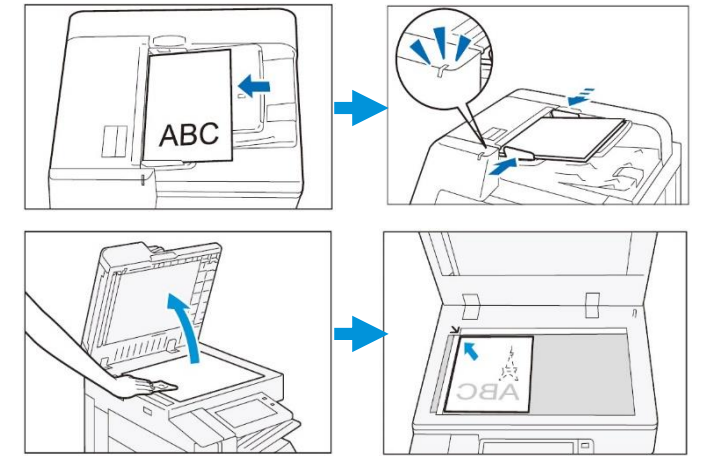


Apeos C8180 / C7580 / C6580



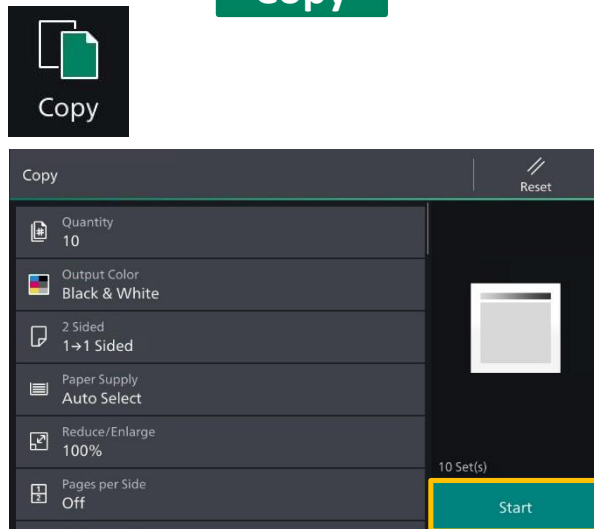
No. and Component

- 1) <Power Saving> button
- 2) Jobs
- 3) <Home> button
- 4) Data indicator
- 5) Login / Out
- 6) Pins
- 7) Address Book



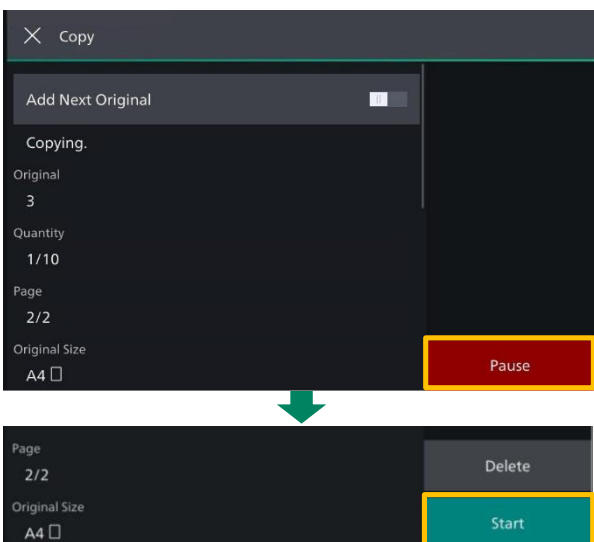
For assistance, please call 2513 2513.

Copy

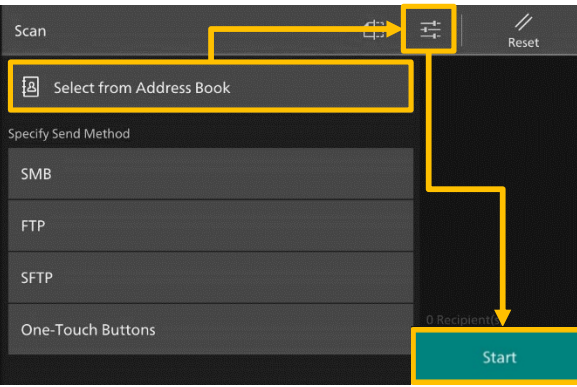


Configure the print quantity and the setting items. Tap on [Start].

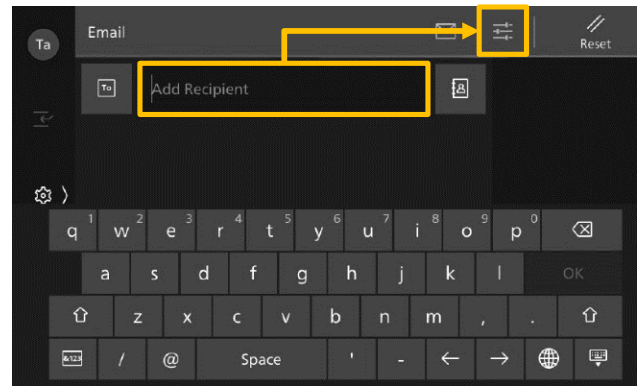
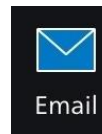
Stop Copy



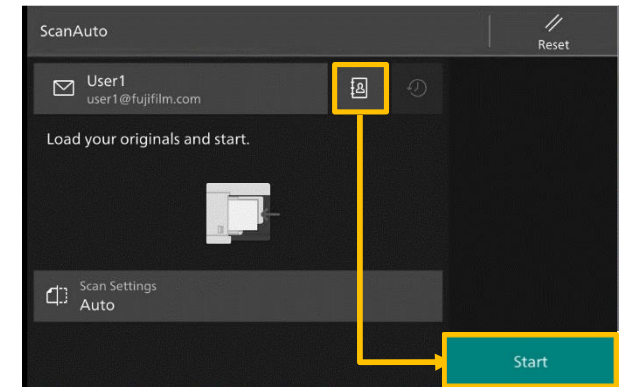
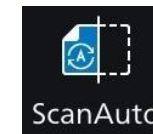
Tap on [Pause], then tap on [Delete].



Specify the recipient by tapping on the [Address Book]. Configure the [Setting Items] and tap on [Start].



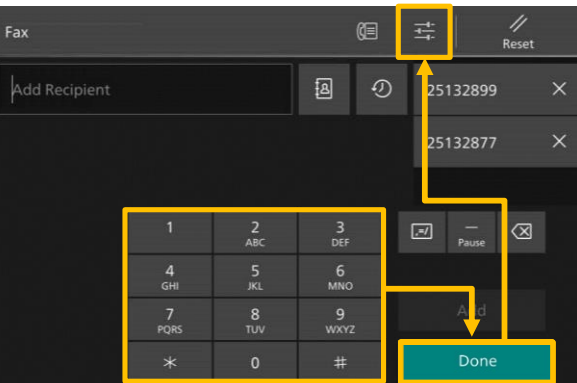
Specify recipient by using [Keyboard] or by tapping on the Address Book. Configure the [Setting Items] and tap on [Start].



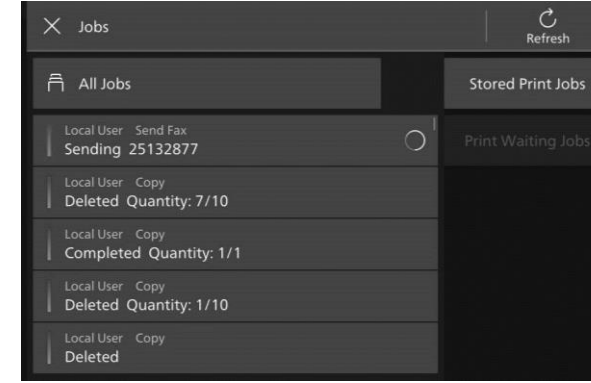
Specify recipient from [Address Book], then tap on [Start].

Scan Auto skip the blank pages and rotate the pages into correct orientation automatically.

Fax



Enter the recipient with the [Keyboard] and tap on [Done]. Configure the [Setting Items] and tap on [Start].



After fax transmission, tap on [Jobs] to verify the job completion status.

You can check active jobs (both running and waiting) and completed jobs.

Enquiry

Scan QR Code for more instruction.



Visit below website for more online support.
<https://support-fb.fujifilm.com>