

Quick Reference Notes - PRINT

簡易操作 - 列印

ApeosPort®-VII C7773/C6673/C5573/C4471/C3373/C3372/C2273
DocuCentre-VII C7773/C6673/C5573/C4471/C3373/C3372/C2273

CONTENTS

目錄

1	Select Printer 選擇印表機	1
2	Configure Print Properties 設定列印內容	2
2.1	Printer / Output 紙張輸出	2
2.1.1	2 Sided Print 雙面列印	3
2.1.2	Staple and Hole Punch 裝訂 / 打孔	3
2.1.3	Select Paper Size and Paper Tray 選擇紙張尺寸及紙盤	4
2.1.4	Output Color 色彩模式	5
2.1.5	Job Type 工作類型	5
2.2	Color Options 色彩選項	10
2.2.1	Image Quality 影像畫質	10
2.3	Layout / Watermark 排版 / 浮水印	11
2.3.1	Pages per Sheet (N-Up) 多張合一 (N 合 1)	12
2.3.2	Poster 海報效果	12
2.3.3	Booklet Layout 小冊子排版	13
3	Advanced Features 其他設定	14
3.1	Paper Setting Wizard 紙張設定指南	14
3.2	Saved Settings 喜好設定	16
3.3	Banner / Mobile Print 其他類型 (橫額/流動裝置列印)	17

Scan QR Code OR Click [here](#) for more instruction.

請掃描 QR Code 或者點擊[這裡](#)查看更多使用說明。

For more online support information please visit

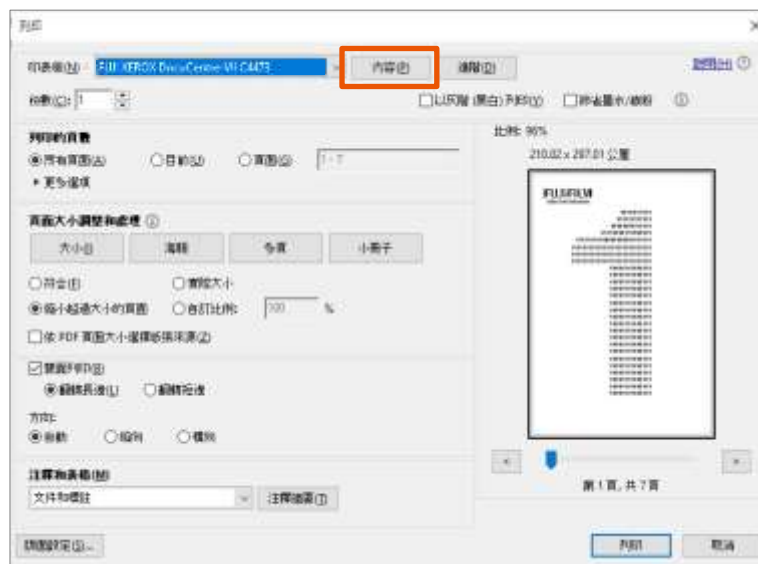
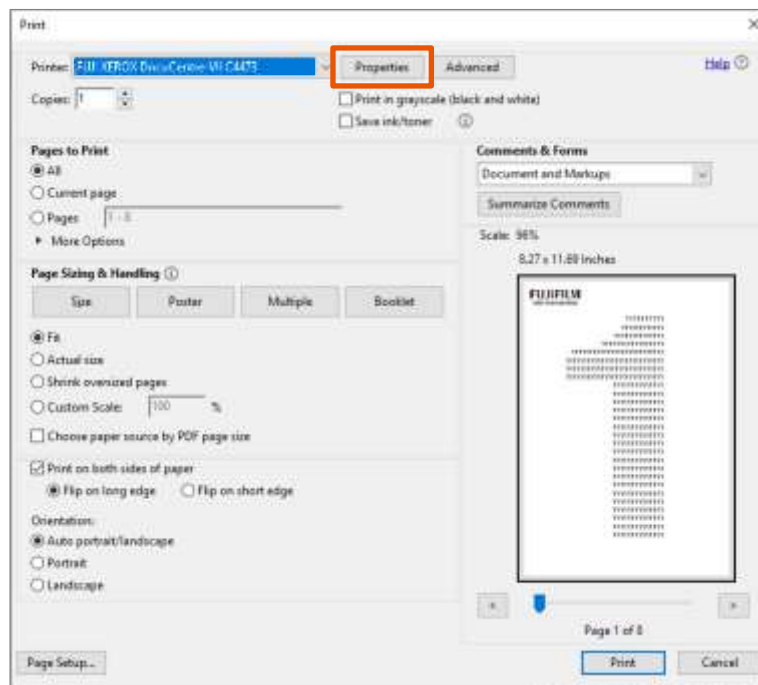
更多相關資料，請訪問以下網址：

<https://support-fb.fujifilm.com>



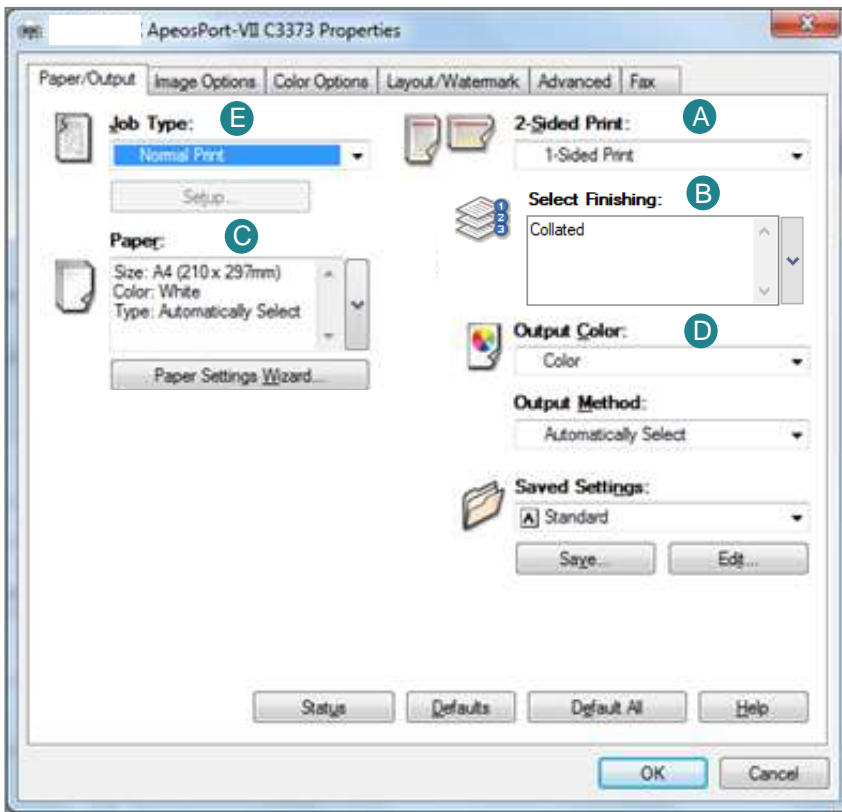
1 SELECT PRINTER 選擇印表機

1. Select [Print] from the [File] menu of the application.
 2. Choose the appropriate printer from "Printer" list.
 3. Click [Print] to send the print job, or click [Properties] to change print option.
1. 選擇應用程式【檔案】選單中的【列印】。
 2. 在「印表機」選擇合適的打印機。
 3. 按【列印】開始列印，或按【內容】以設定列印選項。



2 CONFIGURE PRINT PROPERTIES 設定列印內容

2.1 PRINTER / OUTPUT 紙張輸出



- A [2.1.1 2-Sided Print](#)
- B [2.1.2 Staple and Hole Punch](#)
- C [2.1.3 Select Paper Size & Paper Tray](#)
- D [2.1.4 Output Color](#)
- E [2.1.5 Job Type](#)



- A [2.1.1 雙面列印](#)
- B [2.1.2 裝訂 / 打孔](#)
- C [2.1.3 選擇紙張尺寸及紙盤](#)
- D [2.1.4 色彩模式](#)
- E [2.1.5 工作類型](#)

2.1.1 2 Sided Print 雙面列印

[1 Sided Print]: Print on single page.

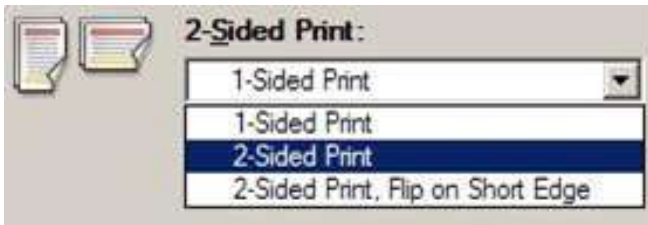
[2 Sided Print]: 2-sided print as head to head.

[2 Sided, Flip on Short Edge]: 2-sided print as head to toe.

【單面列印】：僅在紙張的單面上列印。

【雙面列印】：雙面列印時會以紙張的長邊來對正。

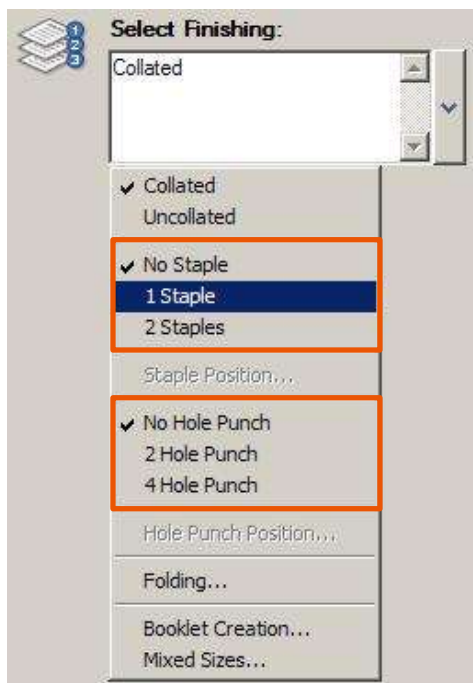
【雙面列印，短邊釘裝】：雙面列印時會以紙張的短邊來對正。



2.1.2 Staple and Hole Punch 裝訂 / 打孔

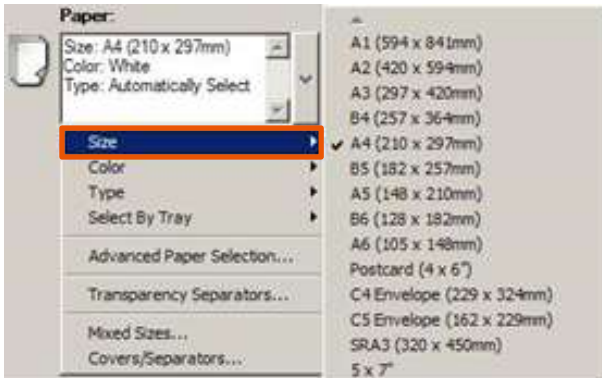
Use the finishing list box to select how you want to staple and hold punch the output.

選擇裝訂及打孔的位置。



2.1.3 Select Paper Size and Paper Tray 選擇紙張尺寸及紙盤

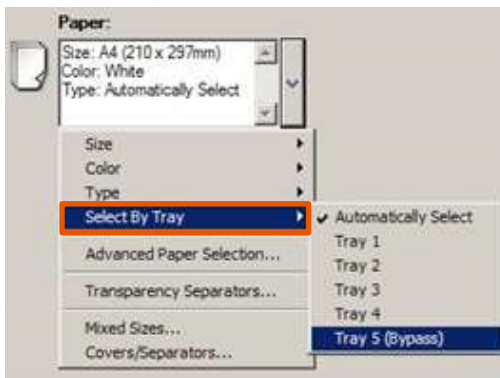
1. Select paper size of the original.



1. 選擇原稿的紙張尺寸。



2. Select paper tray.



2. 選擇紙盤。



2.1.4 Output Color 色彩模式

Specify the output color.

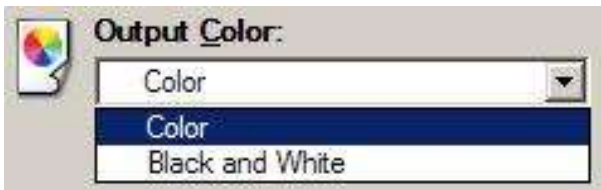
[Color]: Printer automatically switches between color and black based on the colors used on each page.

[Black]: All colors including black will be printed in black.

指定輸出色彩。

【彩色】：印表機會依照各頁所使用的色彩，自動切換彩色和黑白。

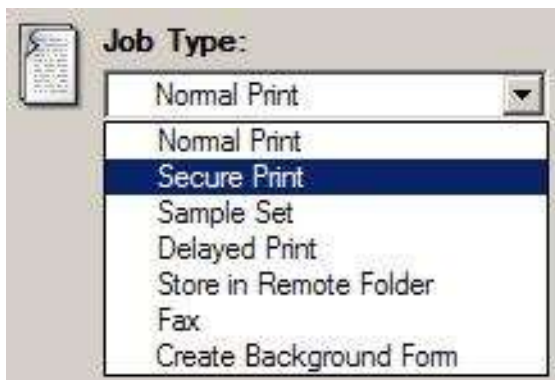
【黑白】：所有色彩 (包括黑色) 將會以黑白列印。



2.1.5 Job Type 工作類型

Select Job Type.

選擇工作類型。

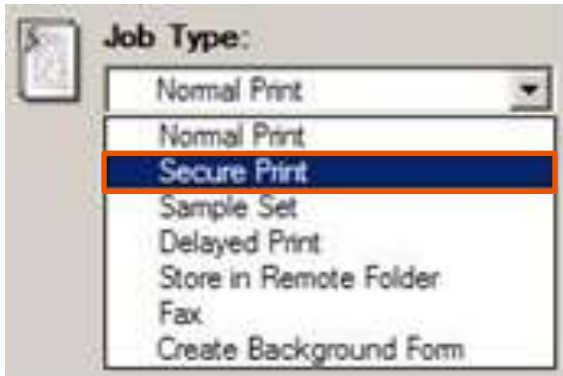


Secure Print 機密列印

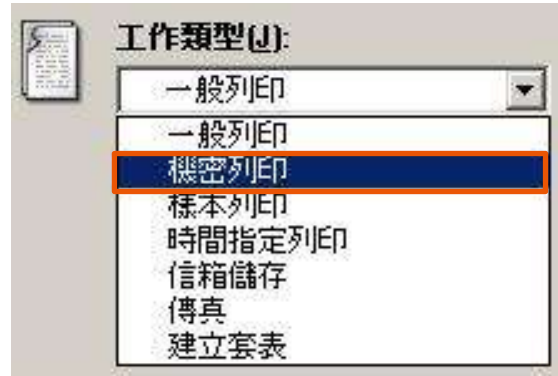
Stores a print job temporarily in memory to output at a convenient time with the control panel of the machine. This feature can be useful for printing confidential documents using a passcode.

您可將列印工作暫存在記憶體上，方便時再使用機器的控制面板輸出。此功能可使用密碼來列印機密文件。

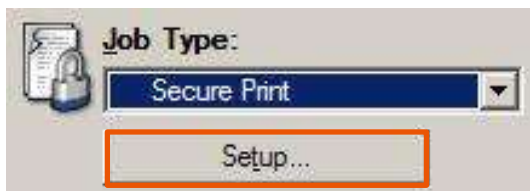
1. Select [Secure Print].



1. 選擇【機密列印】。



2. Click [Setup].



2. 按 [設定]。



3. Set a [User ID] (and [Password] if necessary) for the job then press [OK]. Configure other print properties if necessary and send out the print job.



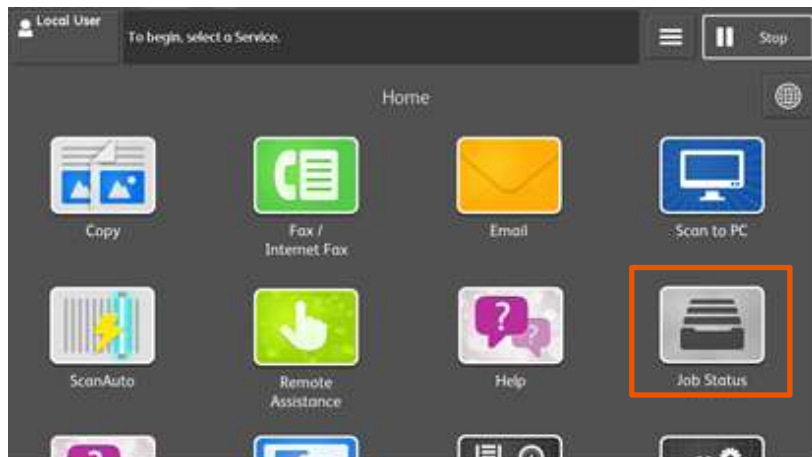
3. 設定【使用者 ID】(如需要，亦可設定【機密列印密碼】)，然後按【確定】。視乎需要設定其他列印選項，並送出列印工作。



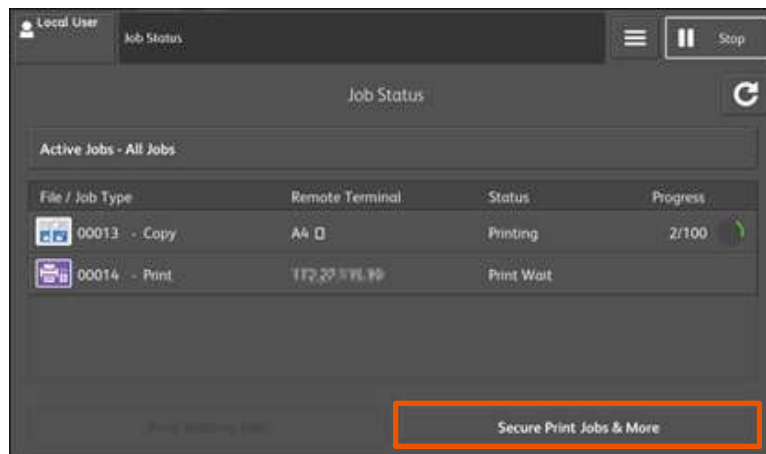
Retrieve Secure Print 列印機密文件

1. Press [Secure Print] button. Go to Step 3.
In absence of the button, go to Step 2(a).
1. 按【機密列印】鍵。跳到步驟 3。
找不到這鍵，由步驟 2(a) 開始。

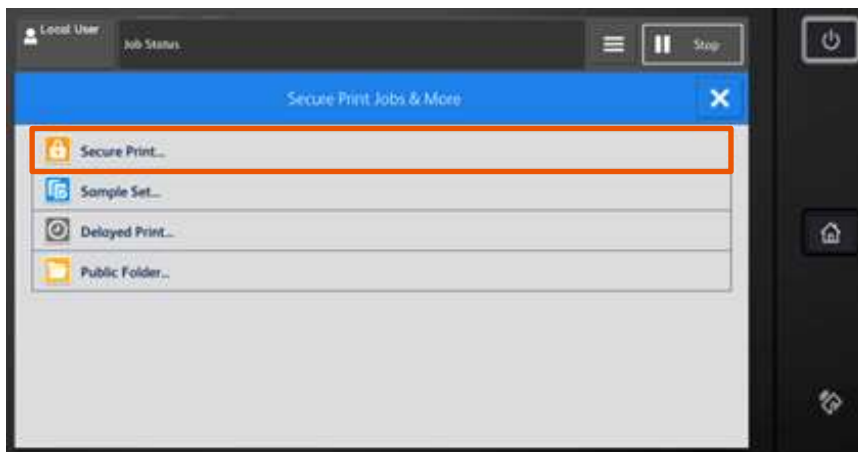
2. (a) Press [Job Status] button.
2. (a) 按【工作確認】鍵。



2. (b) Select [Secure Print Jobs & More].
2. (b) 選擇【儲存文件】。

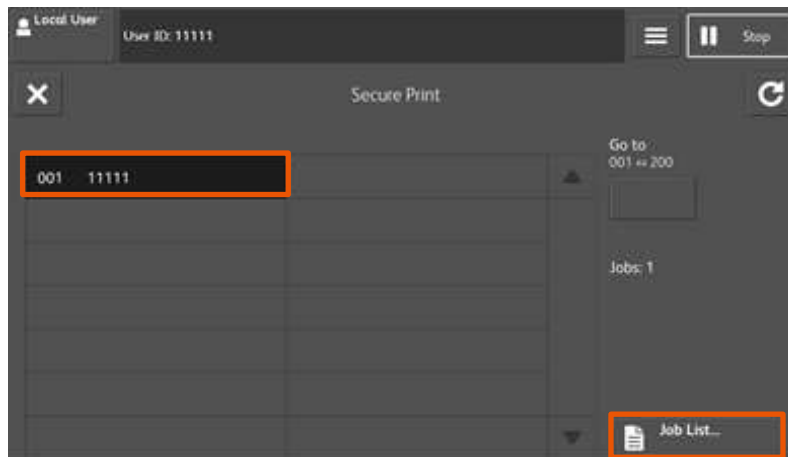


2. (c) Click [Secure Print]. Go to Step 3.
2. (c) 按【機密列印】，然後到步驟 3。



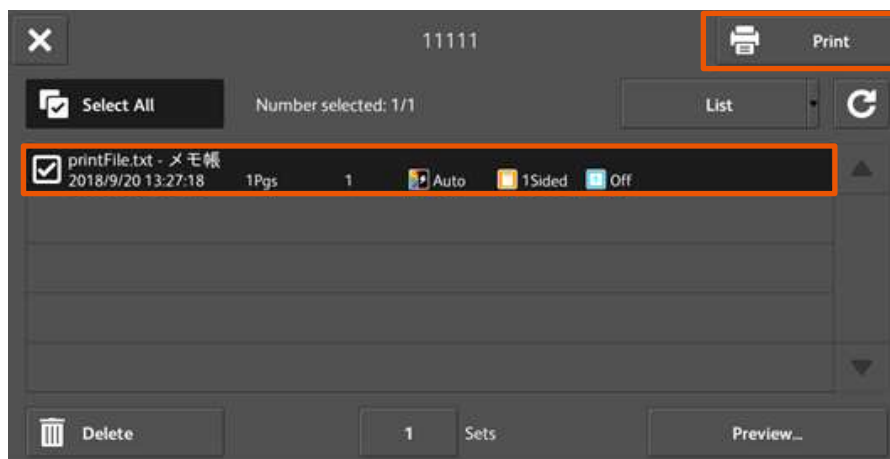
3. Select your User ID and click [Job List], enter password if you are asked to.

3. 選擇你的 User ID，然後按【文件確認 / 列印】，並輸入密碼。



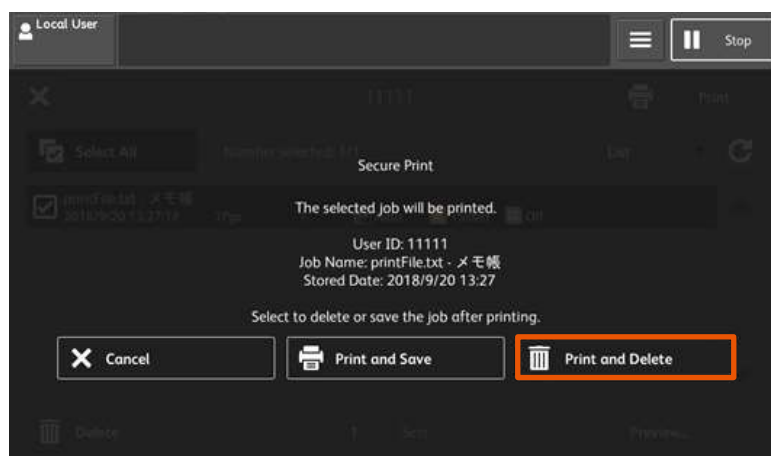
4. Select the document and press [Print].

4. 選擇要列印的文件，然後按【列印】。



5. Click [Print and Delete] to print.

5. 選擇【列印後刪除】開始列印。

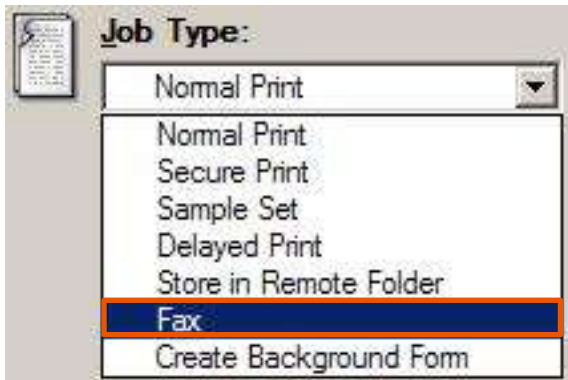


PC Fax 電腦傳真

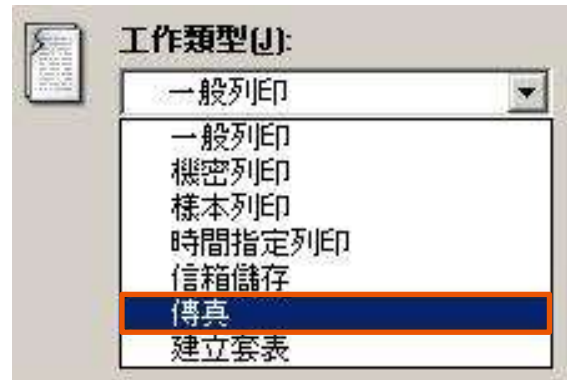
You can directly send fax documents created with application software in the same way that you print.

您可使用和列印相同的方式，直接傳送應用程式建立的傳真文件。

1. Select [Fax] and press [OK] button.

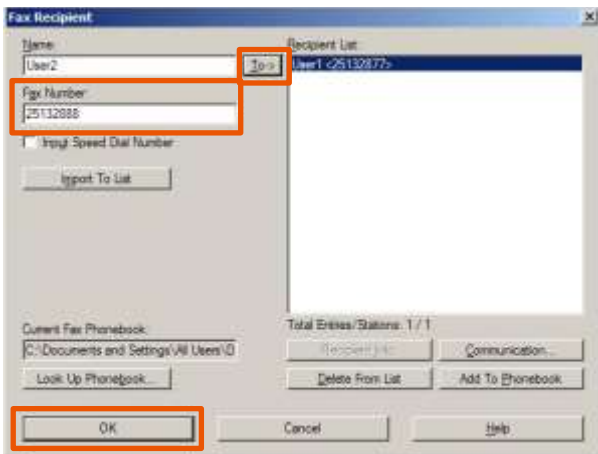


1. 選擇【傳真】然後按【確定】。



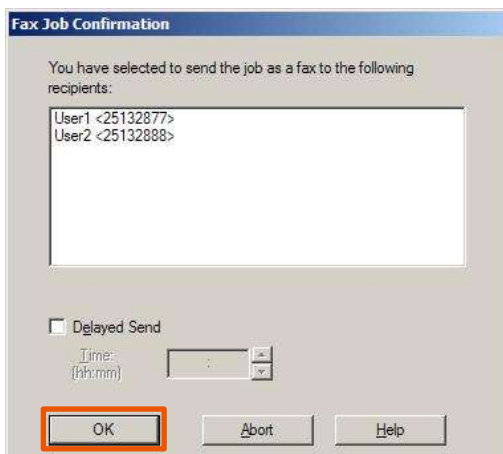
2. Press [Print].
3. Enter fax number in [Fax number] field and press [To->] button to confirm, then press [OK].

2. 按【列印】。
3. 輸入傳真號碼然後按【至->】，最後按【確定】。



4. Press [OK] to start sending fax.

4. 按【確定】開始傳送。



2.2 COLOR OPTIONS 色彩選項

2.2.1 Image Quality 影像畫質

Specify the printing quality

指定列印畫質

[Standard]: For speedy printing regardless of the image quality.

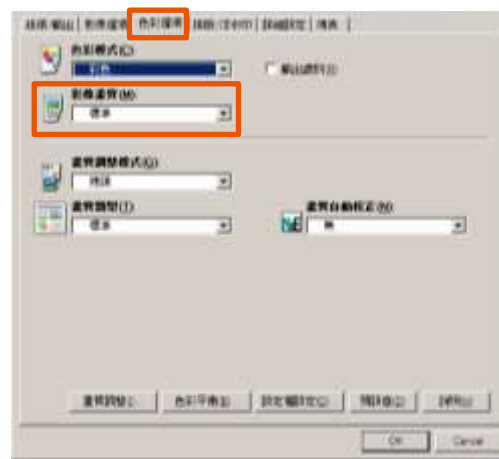
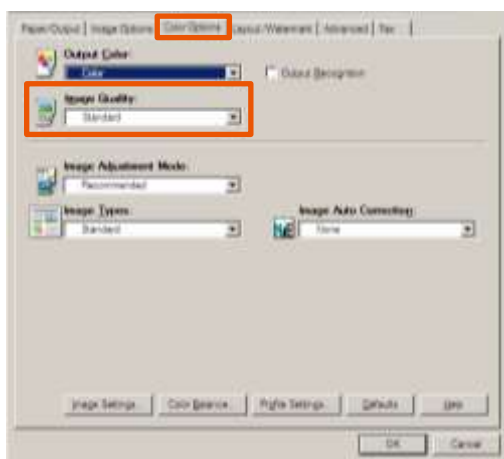
【標準】：不論影像畫質的快速列印。

[High Quality]: For printing with the optimum resolution and gradation.

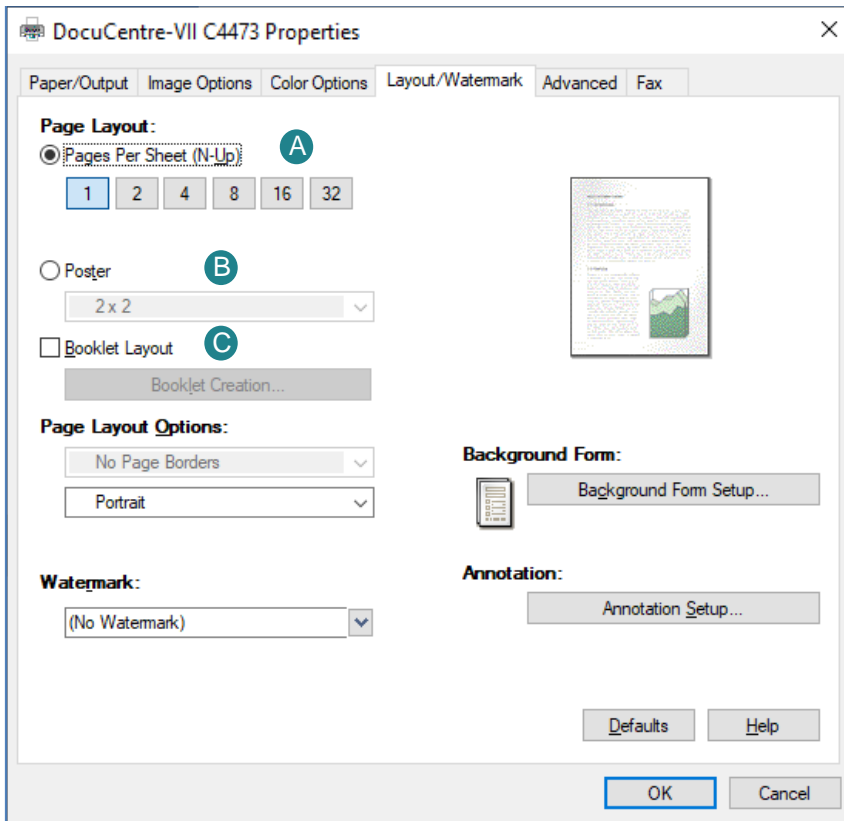
【高畫質】：以最佳解析度及色階列印。

[High Resolution]: For printing fine text or line.

【超高畫質】：列印精細文字及細線條。



2.3 LAYOUT / WATERMARK 排版 / 浮水印



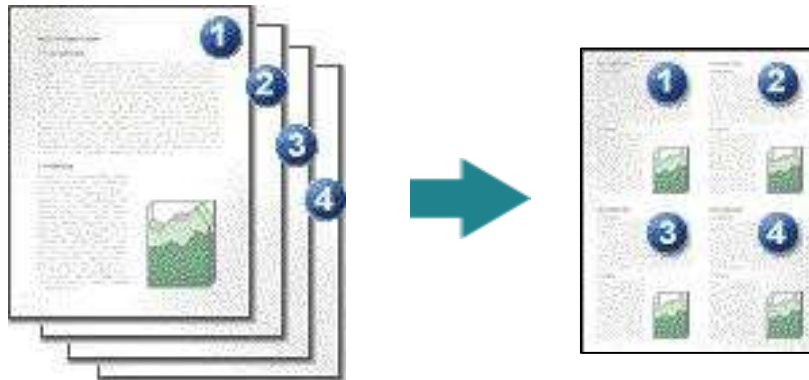
- A [2.3.1 Pages Per Sheet \(N-Up\)](#)
- B [2.3.2 Poster](#)
- C [2.3.3 Booklet Layout](#)



- A [2.3.1 多張合一 \(N合1\)](#)
- B [2.3.2 海報效果](#)
- C [2.3.3 小冊子排版](#)

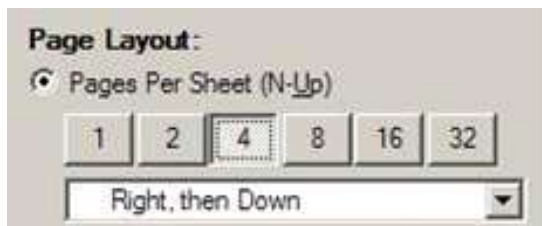
2.3.1 Pages per Sheet (N-Up) 多張合一 (N 合 1)

Prints multiple pages onto one sheet of paper. 在一張紙上列印多頁。



Selecting [1], [2], [4], [8], [16] or [32] enables to print the selected number of pages on a sheet of paper.

選擇【1】、【2】、【4】、【8】、【16】或【32】即可在一張紙上列印所選擇的頁數。



2.3.2 Poster 海報效果

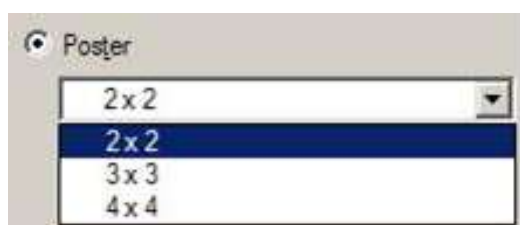
Splits one page of print data into multiple sheets of paper and expands the printed image to fit the size of each sheet. It is used to create large posters, etc.

將一頁的列印資料分為好幾頁，並將列印的影像擴大符合每張紙的尺寸。用來製作大型海報等。



Choose the print size from [2x2], [3x3] or [4x4].

選擇列印尺寸為【2x2】、【3x3】或【4x4】。



2.3.3 Booklet Layout 小冊子排版

Performs 2-sided printing and page allocation for printing a booklet in the correct page order.

執行雙面列印及頁面配置，以按照正確的頁面順序列印小冊子。



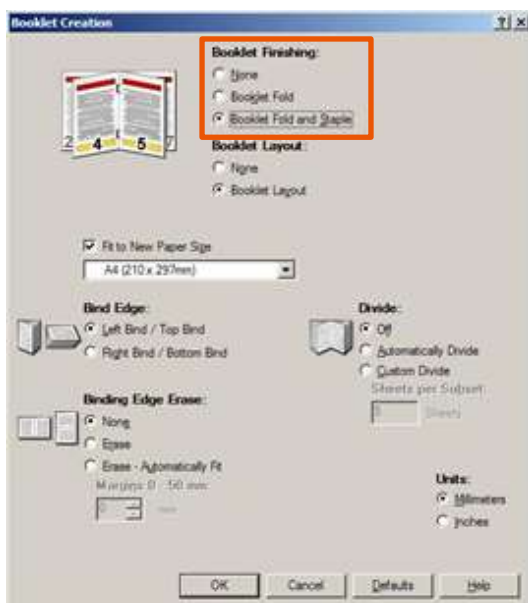
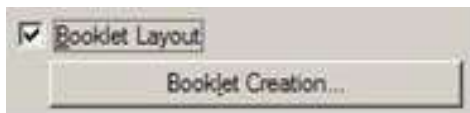
Click the [Booklet Layout] check box to enable the booklet feature.

剔選 [小冊子排版] 方塊，啟用小冊子功能。



If the device is installed with [Booklet Maker Module], you can click the [Booklet Creation] button and choose to apply [Booklet Fold and Staple] output option.

如機器裝有[中間裝訂組件]，可按 [小冊子作成] 按鈕，選擇 [對摺+裝訂] 的輸出選項。



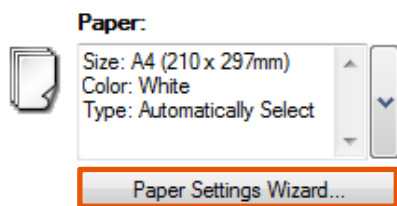
3 ADVANCED FEATURES 其他設定

3.1 PAPER SETTING WIZARD 紙張設定指南

The paper settings wizard will guide you through 3 steps to adjust the settings when printing on special paper such as envelope, postcard, postcard.

通過三個簡單步驟，紙張設定指南指導您正確使用紙張尺寸/類型/方向以進行列印特別紙張，如信封、明信片等。

1. Click the [Paper Settings Wizard...] to enable feature.

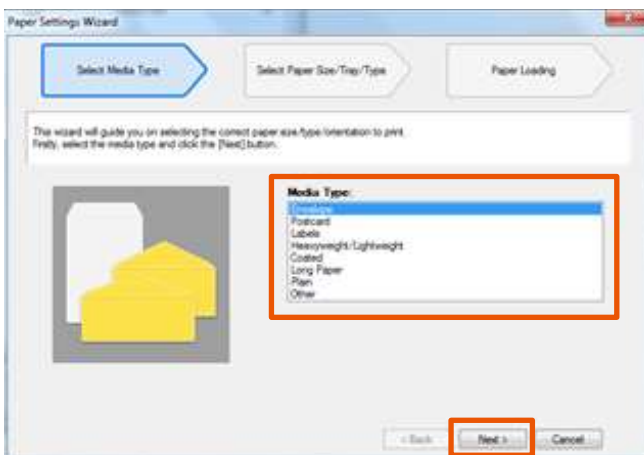


1. 按【紙張設定指南(W)】，啟用功能。

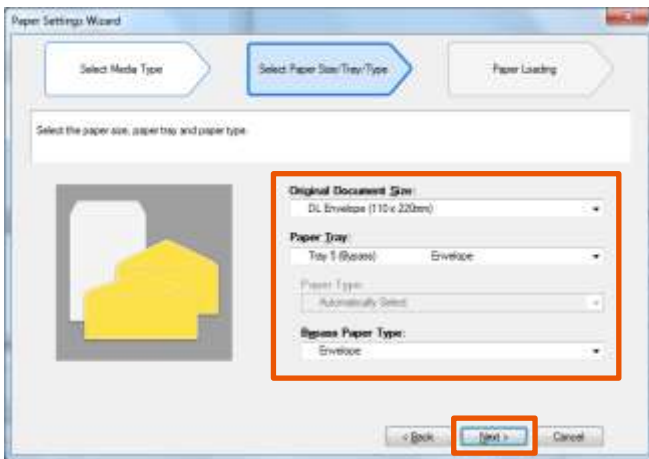


2. Select Media Type: envelope, postcard, label or heavyweight paper, etc.. Press [Next] button.

2. 選擇紙張種類：信封、明信片、標籤貼紙或厚紙等，再按【下一步】。



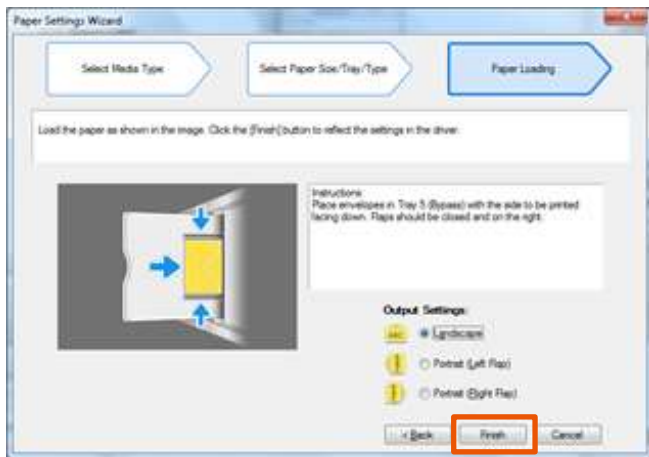
3. Select document size, tray and type.
Press [Next] button.



3. 選擇紙張尺寸、紙盤及種類，再按【下一步】



4. Load the paper as shown in the image.
Click [Finish] to reflect the settings in the driver.



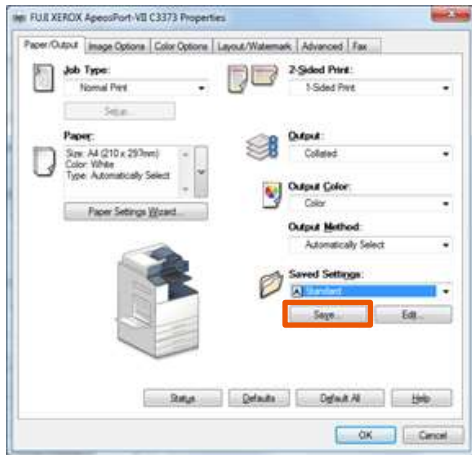
4. 請如圖放置紙張。按【完成】以將設定內容反映於驅動程式。



3.2 SAVED SETTINGS 喜好設定

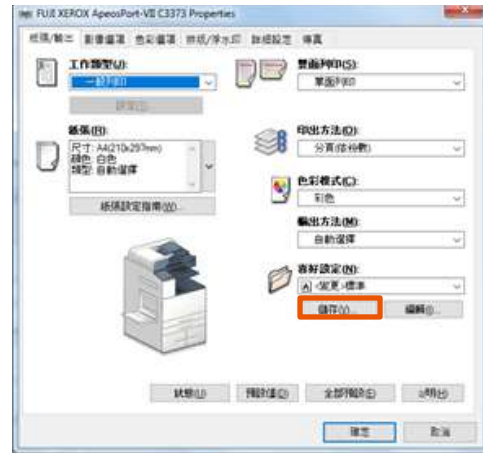
Frequently-used print driver settings can be saved. You can always recall your settings.

1. Select any print driver settings and then click [Save] button.



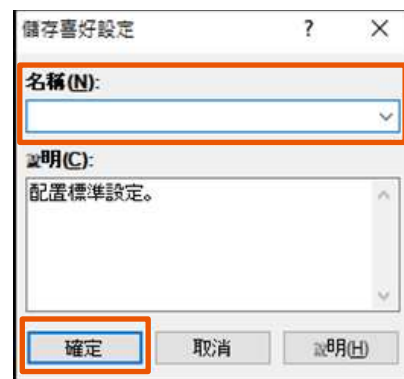
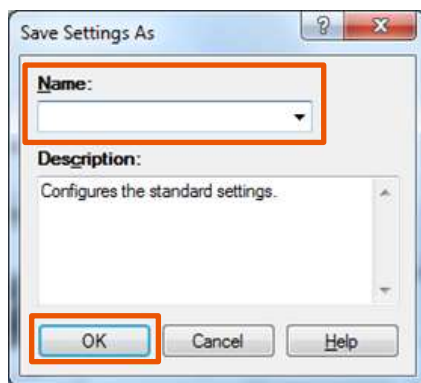
喜好設定可以儲存常用的列印功能，不必在每次列印時重新指定設定。

1. 選擇任何列印選項，之後按【儲存】按鈕。



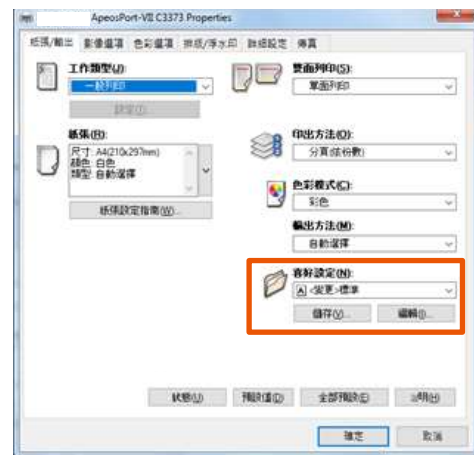
2. Enter the name in the blank field.
3. Click [OK] button.

2. 在空格位置輸入喜好設定名稱。
3. 按【OK】按鈕。



4. Click [Saved Settings] button to retrieve the print driver setting.

4. 按【喜好設定】，在清單選取所需設定。



3.3 BANNER / MOBILE PRINT 其他類型 (橫額/流動裝置列印)

Banner / Long paper printing

Size: 210x900mm, 297x900mm or
297x1200mm

橫額列印

尺寸：

210x900 毫米, 297x900 毫米及 297x1200 毫米



iPhone, iPad or Android printing without
installing printer driver

流動手機及平板電腦列印



Customer Support Center

2513-2513

FUJIFILM and FUJIFILM logo are registered trademarks or trademarks of FUJIFILM Corporation.

ApeosPort and DocuWorks are registered trademarks or trademarks of FUJIFILM Business Innovation Corp.

Fuji Xerox has changed its name to FUJIFILM Business Innovation as of April 1, 2021.

FUJIFILM Business Innovation continues to provide maintenance services with respect to products sold under the Xerox and Fuji Xerox brands.

Xerox, Xerox and Design, as well as Fuji Xerox, Fuji Xerox and Design are registered trademarks or trademarks of Xerox Corporation in Japan and/or other countries.

iPhone and iPad are trademarks of Apple Inc. registered in the U.S. and other countries and regions.

All products names and company names mentioned in this document and trademarks or registered trademarks of their respective companies.