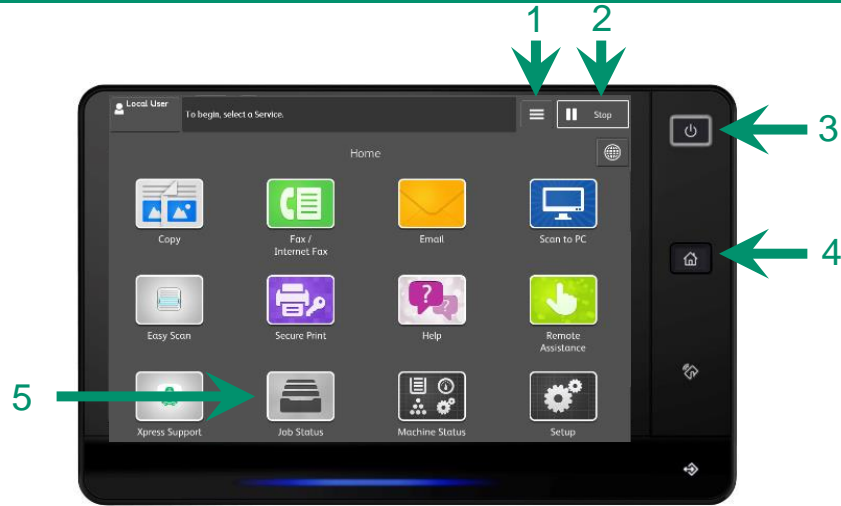




For assistance, please call 2513 2513.

ApeosPort®-VII C7773 / C6673 / C5573 / C4473 / C3373 / C3372 / C2273
DocuCentre-VII C7773 / C6673 / C5573 / C4473 / C3373 / C3372 / C2273



No. and Component

- 1) <Interrupt> button
- 2) <Stop> button
- 3) <Power Saver> button
- 4) <Services Home> button
- 5) <Job Status> button

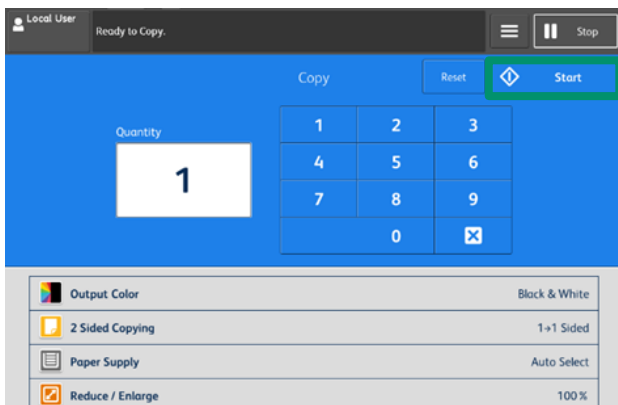
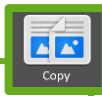
Enquiry

Scan QR Code for more instruction.



Visit below website for more online support.
<https://support-fb.fujifilm.com>

Copy

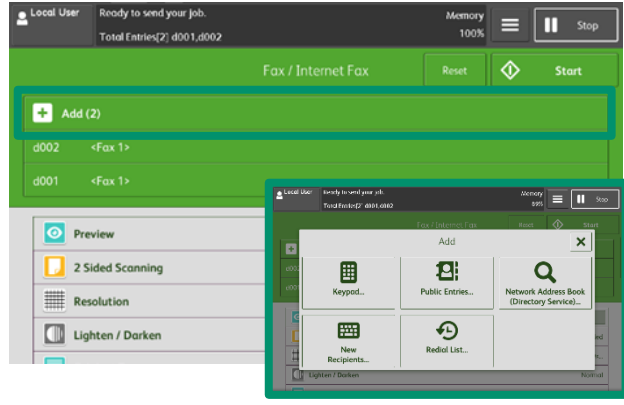


At [Copy] menu, select copy features, then press [Start].

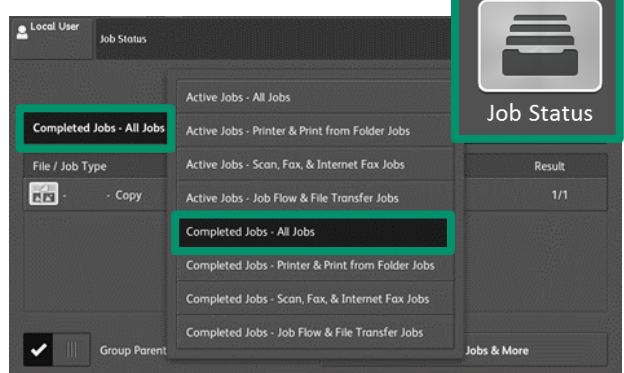


Select [Display Other Features] to find more copy features.

Fax

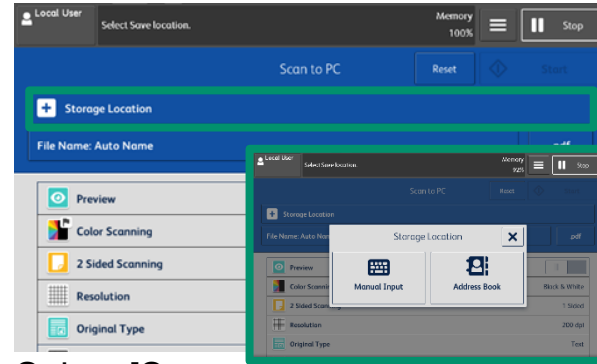
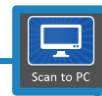


Select recipient from the [Add] list. Click [Close], then select fax features and press [Start].



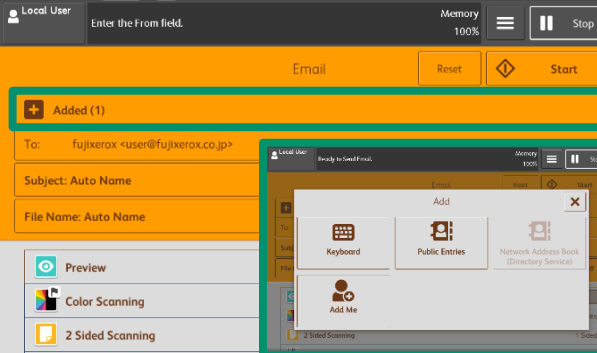
After fax transmission, select [Job Status], and then select [Completed Jobs - All Jobs] to verify the job completion status.

Scan to PC



Select [Storage Location] to store the data in. Click [Close], then select scan features and press [Start].

Email

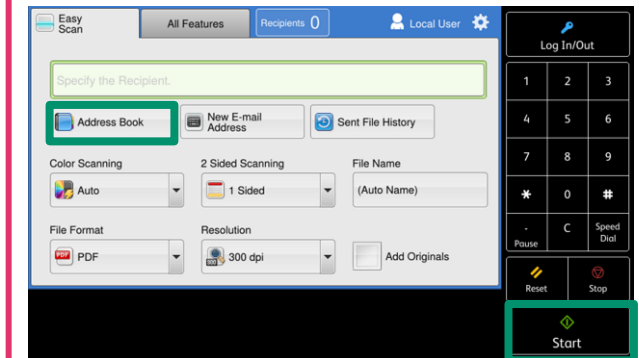


Select recipient from the [Add] list. Click [Close], then select scan features and press [Start].

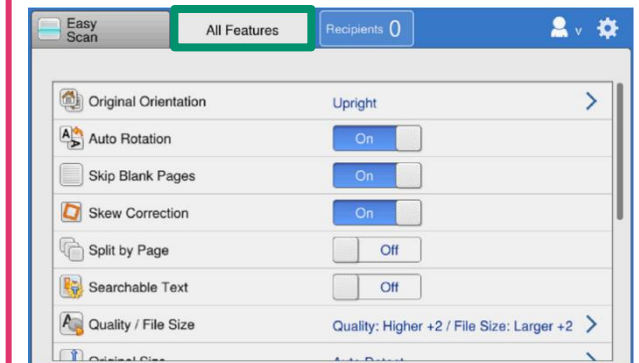
Easy Scan



Easy Scan can skip the blank pages and rotate the pages into correct orientation automatically.



Select recipient from the [Address Book] list. Click [Close], then press [Start].



Select [All Features] to find more scan features.