



## **Quick Reference Notes - Booklet Finishing - Fore Edge Trim, Back & Front Trim and Square Back Fold**

**簡易操作 -  
小冊子製作 -  
書口裁切、上下裁切、方型書背摺頁**

Revoria Press SC180

# CONTENTS

## 目錄

1	Introduction 前言 .....	1
1.1	Note To User 用家須知.....	1
1.2	About The Options 關於選項 .....	2
2	Trim 裁切.....	3
2.1	Fore Edge Trim 書口裁切.....	3
2.2	Back & Front Trim 上下裁切.....	6
3	Square Back Fold 方型書背摺頁.....	9
4	Maintenance & Further Details 維護及更多資料.....	11

**Scan QR Code OR Click here for more instruction.**

請掃描 QR Code 或者點擊這裡查看更多使用說明。

For more online support information please visit

更多相關資料，請訪問以下網址：

<https://support-fb.fujifilm.com>



# 1 INTRODUCTION 前言

## 1.1 NOTE TO USER 用家須知

This note provides the operation guidance for the following booklet finishing:

- Fore Trim
- Back & Front Trim
- Square Back Fold

It targets users of production printer with the following options installed –

- A. Finisher D6 with Booklet Maker
- B. Square Back Fold Trimmer D1
- C. Crease / Two-sided Trimmer D2

**User with options (A) and (B),** please read Chapter 2.1 and Chapter 3 for operation guidance.

**User with options (A), (B) and (C),** please read Chapter 2.1, Chapter 2.2 and Chapter 3 for operation guidance.

本操作說明書涵蓋以下小冊子列印設定：

- 書口裁切
- 上下裁切
- 方型書背摺頁

並為安裝了以下高產能數碼印刷系統選項的用家提供操作指導：

- A. D6 騎馬裝訂檢集機 及
- B. 方形書背摺頁裁切器 D1
- C. 壓摺痕/上下裁切器 D2

只安裝了 **(A)** 及 **(B)** 的用家，請參閱第 2.1 章及第 3 章操作指導。

安裝了 **(A)**、**(B)** 及 **(C)** 的用家，請參閱第 2.1 章、第 2.2 章及第 3 章操作指導。

## 1.2 ABOUT THE OPTIONS 關於選項

**Square Back Fold Trimmer D1** is installed to the end of Finisher D6 with Booklet Maker. It provides fore edge trim and booklet square back fold.

**方形書背摺頁裁切器 D1** 安裝在 D6 騎馬裝訂檢集機的尾端，負責裁切書口邊以及摺方型書背。



**Crease / Two-sided Trimmer D2** is installed to the front of Finisher D6 with Booklet Maker. It trims back edge and front edge.

**壓摺痕/上下裁切器 D2** 安裝在 D6 騎馬裝訂檢集機的前端，負責裁切上端及下端。



Before applying the features of the option, booklet finishing (saddle stitch) must be selected.

要做到以上效果，必須先設定列印書冊 (騎馬裝訂)。

All settings in this quick reference note are performed on Revoria Flow (print server).

本簡易操作說明書基於 Revoria Flow (列印伺服器) 講解。

## 2 TRIM 裁切

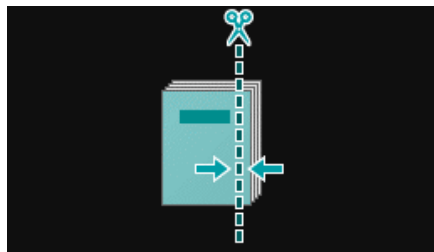
### 2.1 FORE EDGE TRIM 書口裁切

Fore Edge Trim refers to the trimming of the side opposite to the spine.

書口裁切指書脊對面一端的裁切。

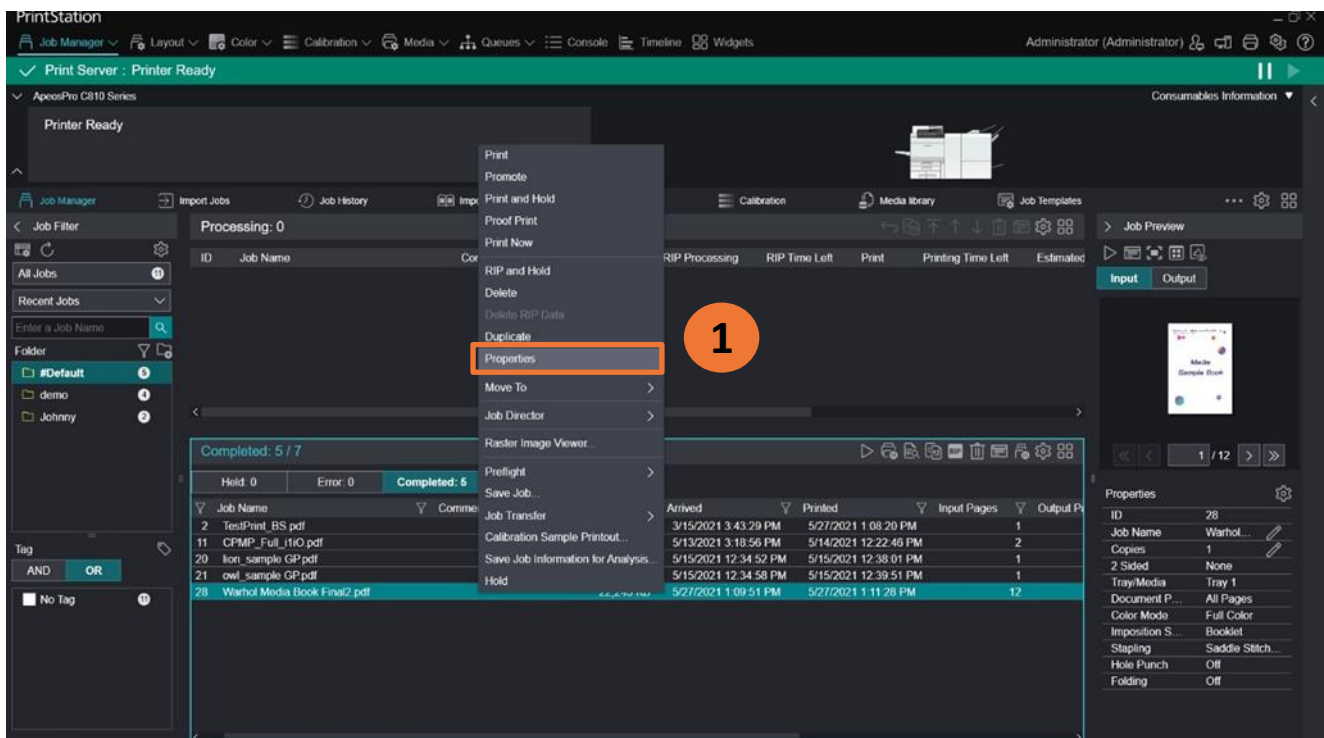
\* This feature can be applied together with Back & Front Trim (refer to Chapter 2.2).

\* 這個設定可以與上下裁切同用 (見第 2.2 章)。



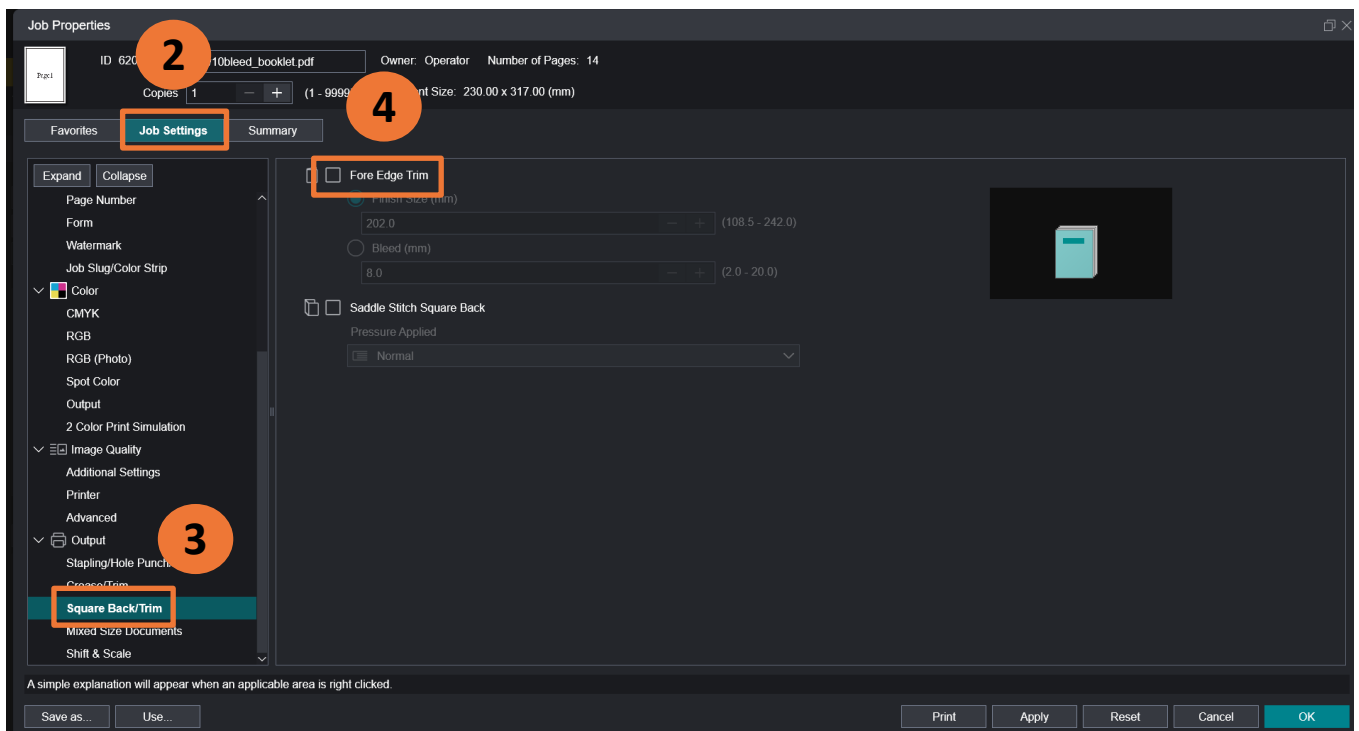
1) Right-click the job to reveal the menu. Select [Properties].

1) 在列印工作上按滑鼠右鍵，在顯示選單按 [內容]。



- 2) Click [Job Settings].
- 3) Click [Square Back/Trim].
- 4) Check [Fore Edge Trim] box.

- 2) 按 [進階設定]。
- 3) 按 [書口裁切/騎馬訂方型書背]。
- 4) 選擇 [書口裁切]。



Two trim types are available:

1) Finished Size

The measurement between back and front of the output area after trimming

2) Bleed

The measurement of the trimmed-out area.

Finished Size and Bleed are complementary to each other. That means when Finished Size increases, Bleed decreases (and vice versa).

Click [OK] to save.

選擇其中一款設定：

1) 設定成品尺寸

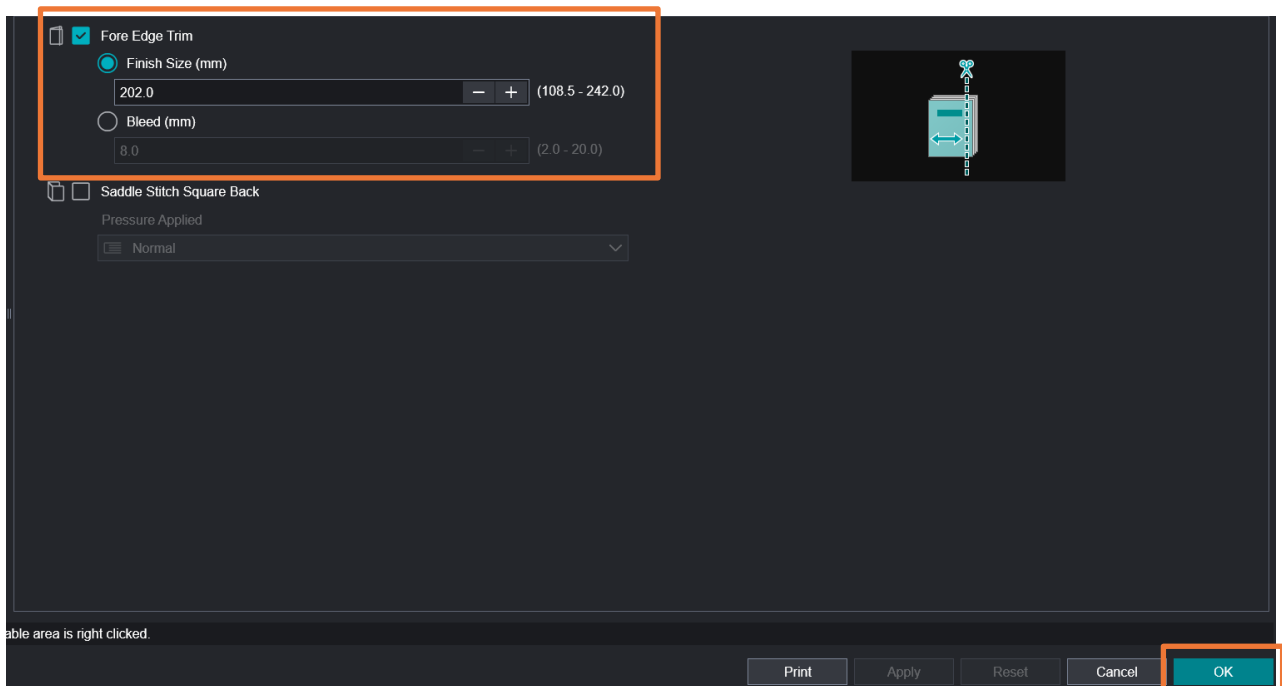
裁切後輸出文件範圍的長度

2) 指定裁切寬度

裁切出來的部份

以上兩款數值此消彼長，例如設定成品尺寸增加，則指定裁切寬度減少。反之亦然。

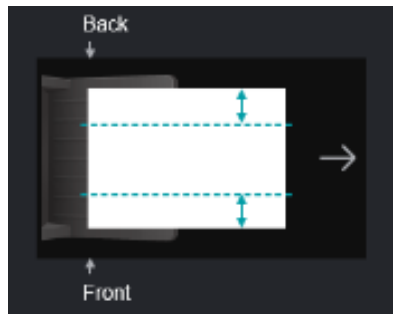
最後按 [確定] 儲存。



## 2.2 BACK & FRONT TRIM 上下裁切

Back Trim & Front Trim refer to the trimming of the two sides adjacent to the spine.

上下裁切指輸出文件上端和下端 (毗連書脊) 的裁切。



1) Right-click the job to reveal the menu. Select [Properties].

1) 在列印作業上按滑鼠右鍵，在顯示選單按 [內容]。

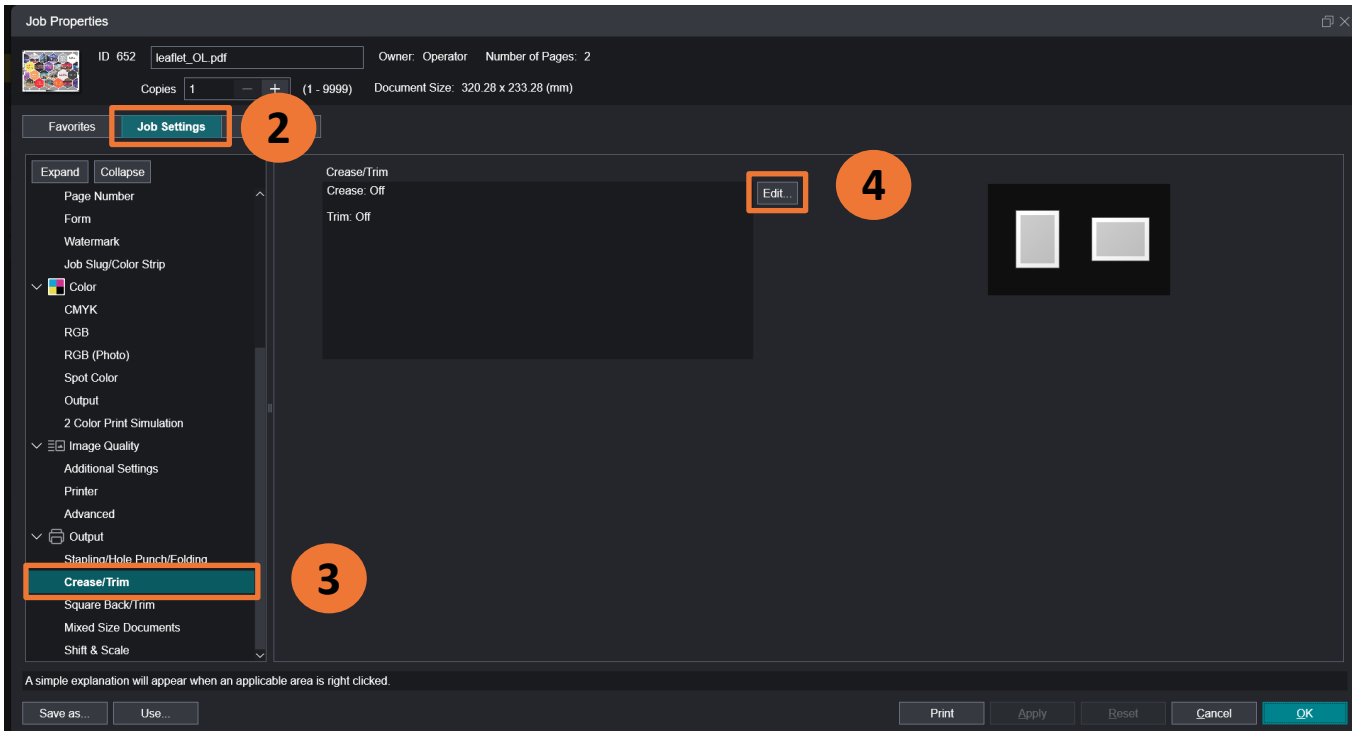
ID	Job Name	Cor	Arrived	Printed	Input Pages	Output P
2	TestPrint_BS.pdf		3/15/2021 3:43:29 PM	5/27/2021 1:08:20 PM	1	
11	CPMP_Full_t1O.pdf		5/13/2021 3:18:56 PM	5/14/2021 12:22:46 PM	2	
20	kon_sample GP.pdf		5/15/2021 12:34:52 PM	5/15/2021 12:38:01 PM	1	
21	owl_sample GP.pdf		5/15/2021 12:34:58 PM	5/15/2021 12:39:51 PM	1	
28	Warhol Media Book Final2.pdf		5/27/2021 1:09:51 PM	5/27/2021 1:11:26 PM	12	

Property	Value
ID	28
Job Name	Warhol...
Copies	1
2 Sided	None
Tray/Media	Tray 1
Document P...	All Pages
Color Mode	Full Color
Imposition S...	Booklet
Stapling	Saddle Stitc...
Hole Punch	Off
Folding	Off



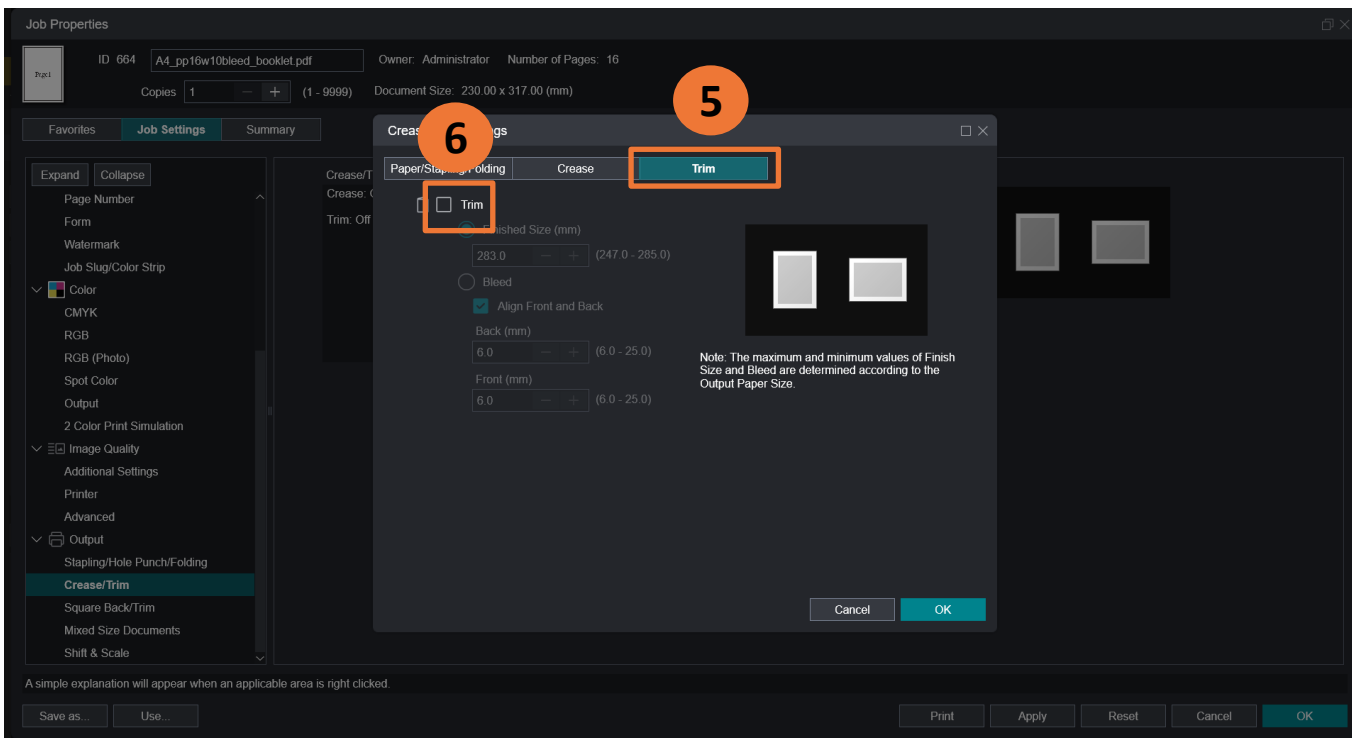
- 2) Click [Job Settings].
- 3) Select [Crease/Trim].
- 4) Click [Edit].

- 2) 按 [進階設定]。
- 3) 選擇 [摺疊/上下裁切]。
- 4) 按 [編輯]。



- 5) Click [Trim].
- 6) Check [Trim] box.

- 5) 按 [上下裁切]。
- 6) 選擇 [上下裁切]。



Two trim types are available:

1) Finished Size

The measurement between back and front of the output area after trimming

2) Bleed

The measurement of the trimmed-out area.

Finished Size and Bleed are complementary to each other. That means when Finished Size increases, Bleed decreases (and vice versa).

By default, [Align Front and Back] box is checked. That means the trimming of front and back will be of the same value.

By unchecking the box, different values can be entered in Front & Back.

Click [OK] to save.

選擇其中一款設定：

1) 設定成品尺寸

裁切後輸出文件範圍的長度

2) 指定裁切寬度

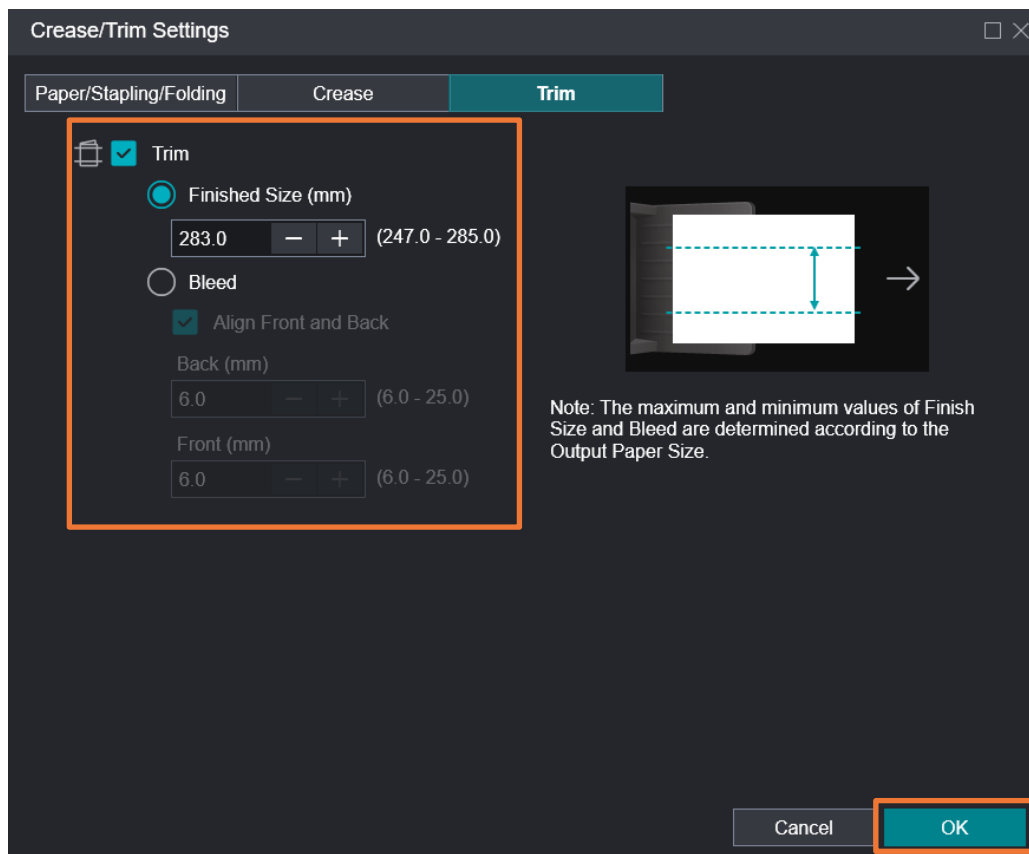
裁切出來的部份

以上兩款數值此消彼長，例如設定成品尺寸增加，則指定裁切寬度減少。反之亦然。

預設 [前端後端相同] 已選擇，表示上端裁切數值和下端裁切數值一樣。

別走此選擇，則容許上下端不同數值。

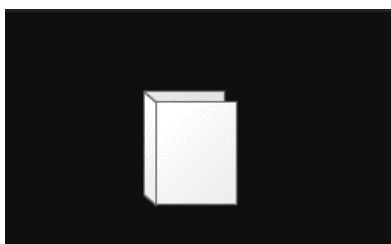
最後按 [確定] 儲存。



### 3 SQUARE BACK FOLD 方型書背摺頁

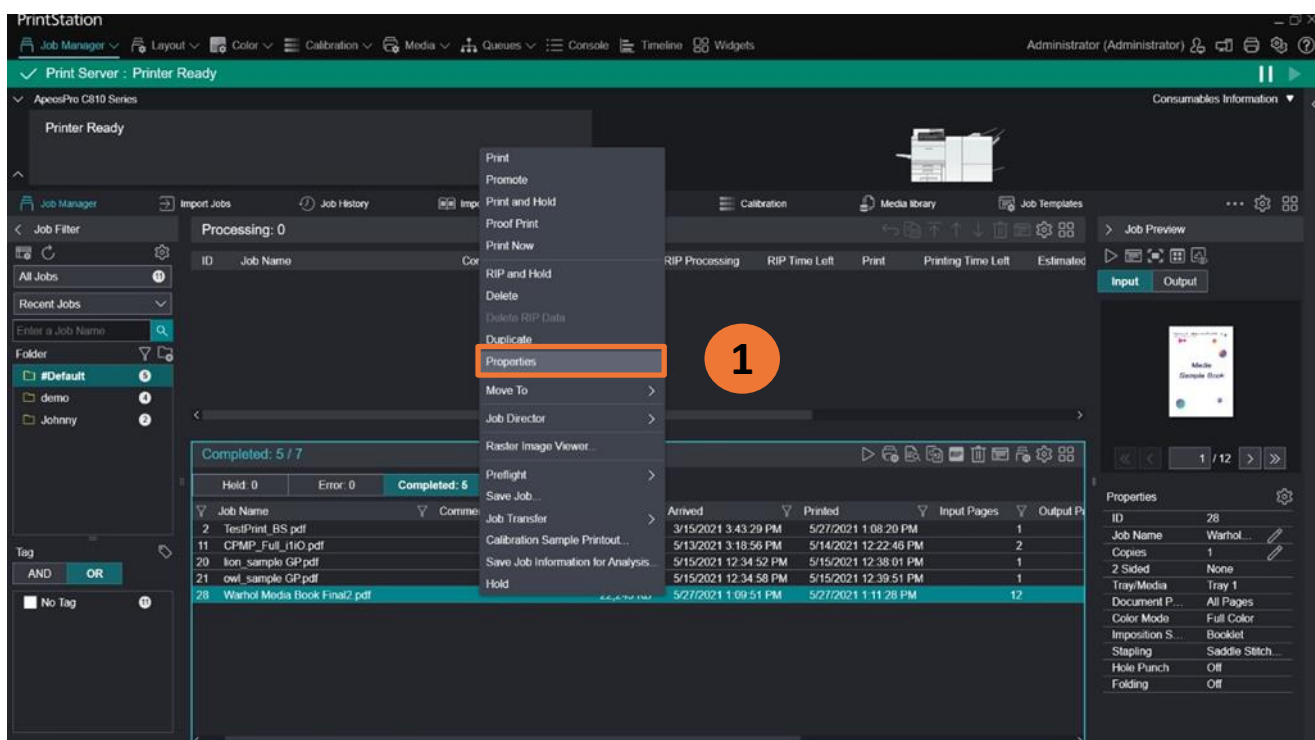
Square Back refers to the pressing of spine. That results in a degree of angular edges around the spine and stronger binding of signatures.

方型書背摺頁使書脊起方角，束緊內容頁，不易散開。



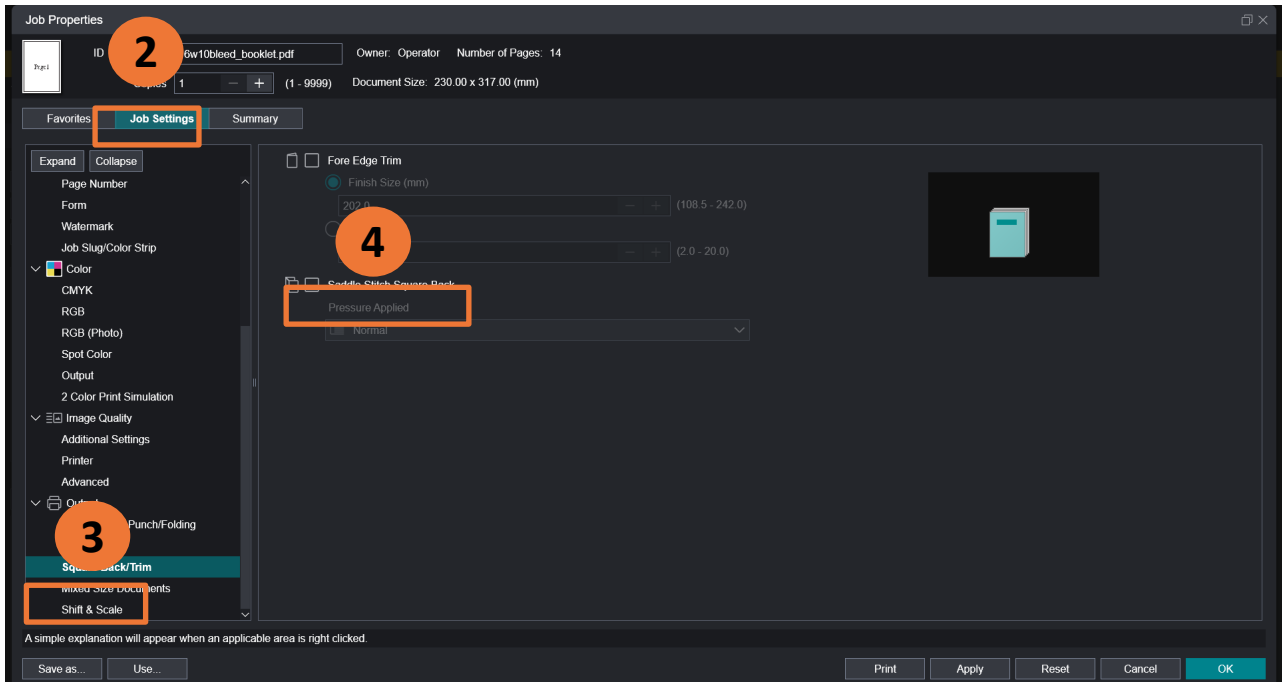
1) Right-click the job to reveal the menu. Select [Properties].

1) 在列印工作上按滑鼠右鍵，在顯示選單按 [內容]。



- 2) Click [Job Settings].
- 3) Click [Square Back/Trim].
- 4) Check [Saddle Stitch Square Back] box

- 2) 按 [進階設定]。
- 3) 按 [書口裁切/騎馬訂方型書背]。
- 4) 選擇 [騎馬訂方型書背]。



Select a degree under “Pressure Applied”:

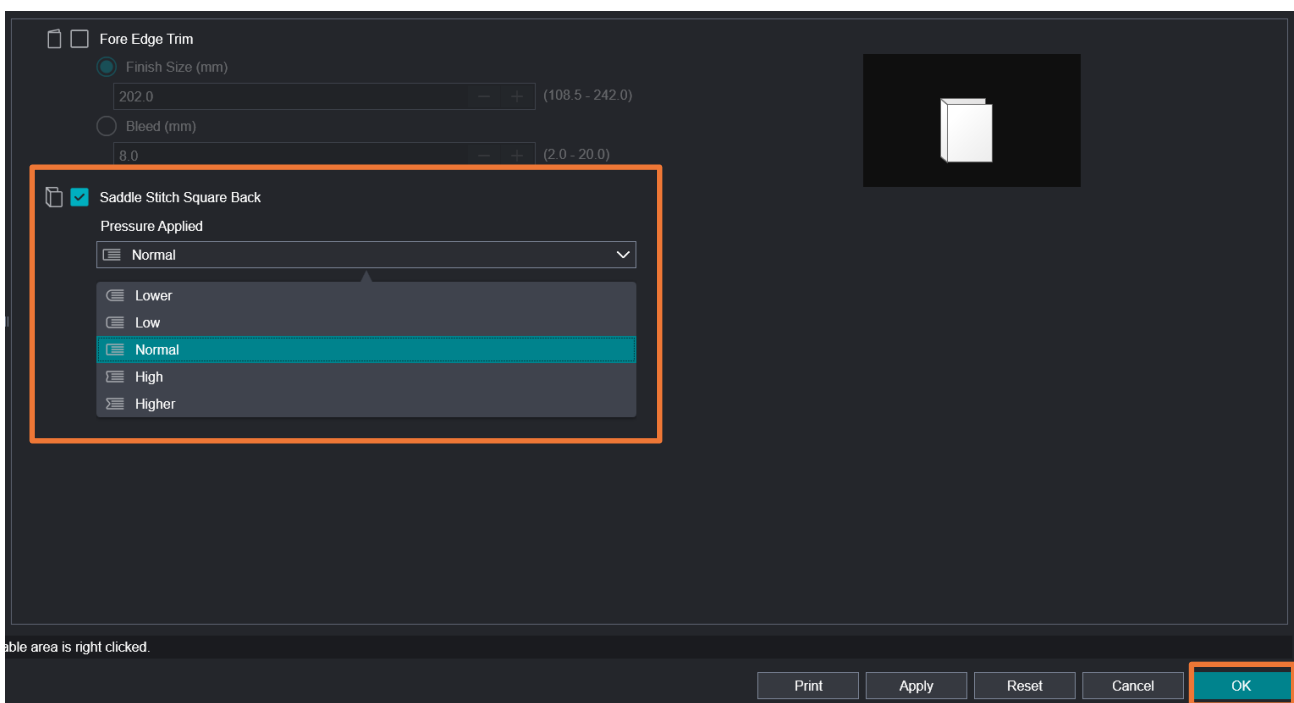
選擇以下一種“摺疊強度”：

- Lower
- Low
- Normal
- High
- Higher

- 弱
- 稍弱
- 普通
- 稍強
- 強

Click [OK] to save.

最後按 [確定] 儲存。



## 4 MAINTENANCE & FURTHER DETAILS 維護及更多資料

Please refer to the document Reference Guide - Optional Units. This document can be downloaded in the “Documentation” section on “Support & Driver” on our Hong Kong official website.

(To access the webpage, go to “Contents” page of this note and access via the QR code.)

請參閱 Reference Guide – Optional Units 文件。要下載此文件，請到本公司香港官方網站的“支援與驅動程式”，進入“說明文件”便可找到。

(本簡易操作說明書的目錄頁 (Contents) 載有直達“支援與驅動程式”的二維碼。)

# Customer Support Center

## 2513-2513