

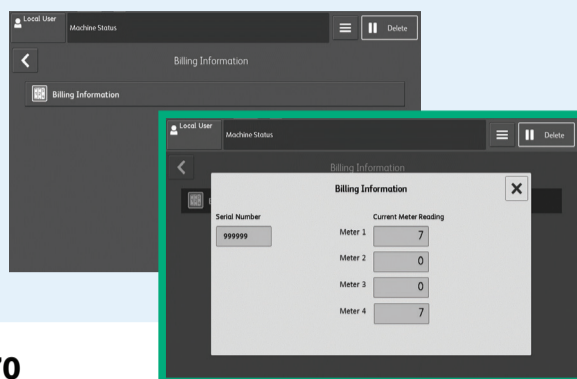
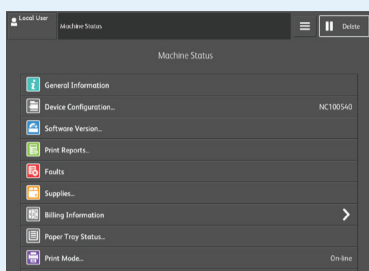
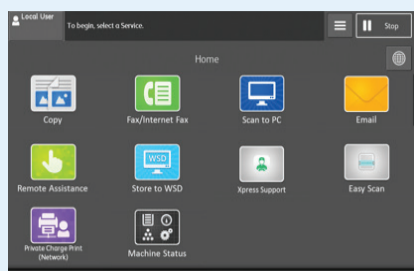
在下方找尋屬於你的打印機，跟着以下步驟讀取列印的頁數

ApeosPort / DocuCentre-VII C7773/C6673/C5573/C4473/C3373/C3372/C2273

1. 在螢幕上選擇「Machine Status」

2. 選擇「Billing Information」

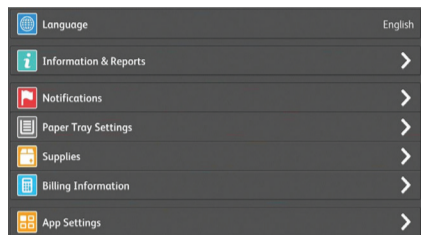
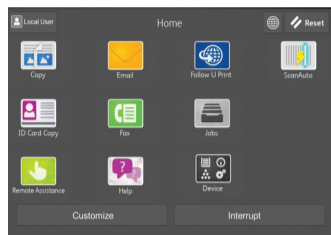
3. 選擇「Billing Information」



ApeosPort C7070 / C6570 / C5570 / C4570 / C3570 / C3070

1. 在螢幕上選擇「Device」

2. 選擇「Billing Information」



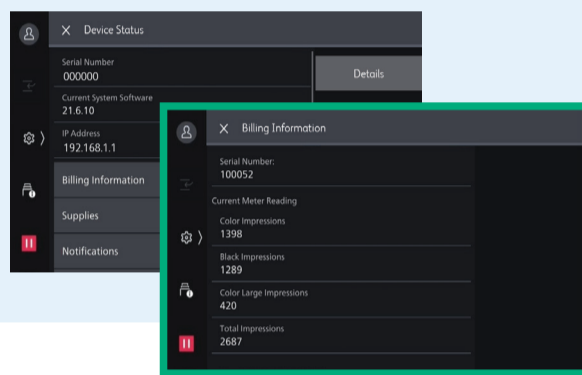
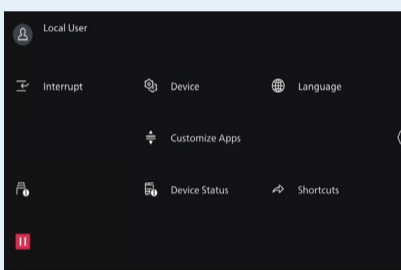
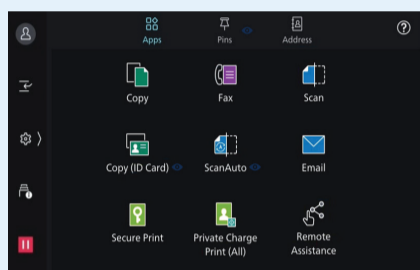
Serial Number:	501325
Current Meter Reading	
Color Impressions	2759
Black Impressions	1672
Color Large Impressions	308
Total Impressions	4431

Apeos C7070 / C6570 / C5570 / C4570 / C3570 / C3070

1. 在螢幕上選擇「設定 ICON」

2. 選擇「Device Status」

3. 選擇「Billing Information」

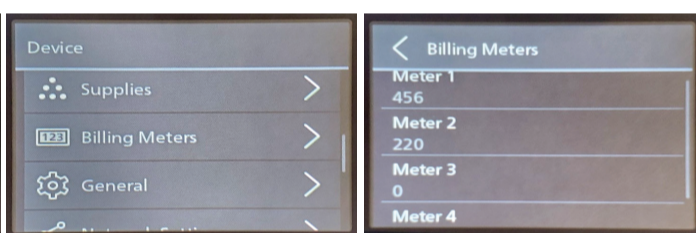


Apeos C325 z/dw (MFP)

1. 在螢幕上選擇「設定 ICON」

2. 選擇「Device」

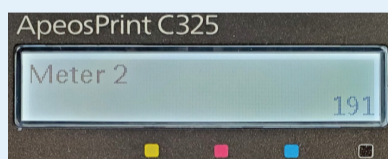
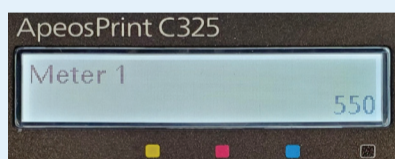
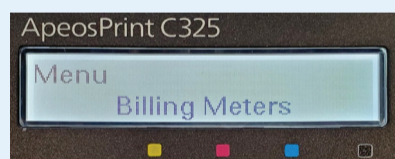
3. 選擇「Billing Meters」



- [Meter 1] 顯示彩色列印總數
- [Meter 2] 顯示黑白列印總數
- [Meter 3] 永遠顯示「0」
- [Meter 4] 顯示列印總數 (Meter 1 + Meter 2)

ApeosPrint C325 dw (SFP)

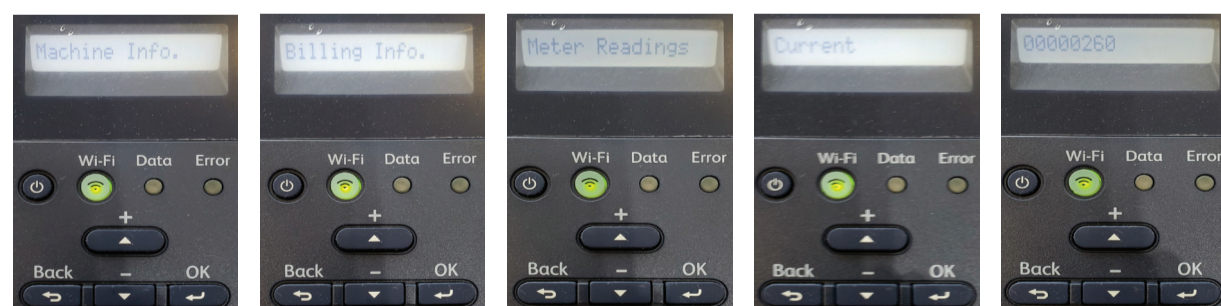
1. 在螢幕上選擇「Menu」 2. 選擇「Billing Meters」



- [Meter 1] 顯示彩色列印總數
- [Meter 2] 顯示黑白列印總數
- [Meter 3] 永遠顯示「0」
- [Meter 4] 顯示列印總數 (Meter 1 + Meter 2)

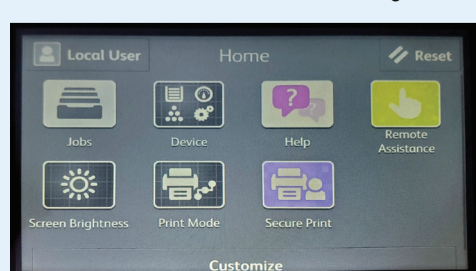
DocuPrint P385 dw

按 ▲ 或 ▼ 以顯示「Machine Info」，然後按 OK > Billing info > Meter Readings
顯示已印出的頁數



ApeosPort-VII CP4421 & P5021

1. 在螢幕上選擇「Device」 2. 選擇「Billing Information」



ApeosPort-VII CP4421



ApeosPort-VII P5021

